



# APG Family Bulletin

December 10, 2025



# APG Calendar

Ongoing	Please Donate Snacks for Staff <a href="#">WISHLIST</a>
Today	Winter Concert (Advanced), 6pm, APG Auditorium, Free Admission
Thru 12/12	Inclusive Schools Week, see slide for details
Thru 12/14	Sports Basement, 20% off Sale for APG Basementeers
12/12	Winter BeaconFest <a href="#">RSVP HERE</a>
12/12	Lost & Found items will be donated today afternoon - find your lost items beforehand!
12/16	Holiday Family Event, Cocoa & Community <a href="#">RSVP</a> by 12/13; Holiday Toy Drive Ends; donate toys for kids ages 1-12; drop off at Wellness Center
12/17	School Site Council Meeting, 4:10pm, APG Office
12/20 - 1/4	Winter Break, No School. See you back at APG on January 5, 2026!
1/19	Martin Luther King Holiday. No School
Ongoing	<a href="#">Donate to Jag Fund</a> ; <a href="#">Chicken Care Volunteers Needed</a> ; <a href="#">Study Center</a> ; <a href="#">Wellness Center Referrals</a>



**WINTER BREAK  
NO SCHOOL  
DECEMBER 20TH -  
JANUARY 4TH**



PURCHASE AND DONATE  
ITEMS FROM OUR STAFF  
SNACK WISHLIST  
THIS MONTH.



THANK YOU!

# SUPPORT APG JOIN OUR PTSA

Join  
Today  
**ONLY \$11!**

WHO SHOULD JOIN?  
PARENTS  
STUDENTS  
ALUMNI  
TEACHERS  
STAFF  
FRIENDS  
RELATIVES  
NEIGHBORS  
GRANDPARENTS  
LOCAL BUSINESS OWNERS



## WHY JOIN?

### PTSA DUES HELP PAY FOR:

- School Garden
- Outdoor Education Teacher
- Classroom Supplies
- P.E. Equipment and Uniforms
- Teacher Grants
- Library and Wellness Center Supplies
- Teacher and Staff Appreciation
- Family Socials and Events

# APG



[JOINTOTEM.COM/CA/SAN-FRANCISCO/A-P-GIANNINI-MIDDLE-SCHOOL-PTSA](https://JOINTOTEM.COM/CA/SAN-FRANCISCO/A-P-GIANNINI-MIDDLE-SCHOOL-PTSA)

Read more about APG PTSA at [APGSF.COM](https://APGSF.COM)

WE'D LOVE TO  
MEET OUR NEW  
GOAL OF 300  
PTSA MEMBERS

# School Site Council Meeting - Wednesday, Dec. 17

Location: In-Person, APG Main office; Zoom can be provided, if requested

Date and time: Weds 12/17, 4:10-5:10 p.m.

Questions? Contact Tai-Sun Schoeman, Principal: [schoemant@sfusd.edu](mailto:schoemant@sfusd.edu)

## 12/17/25 Agenda

- Review and approve 11/19 Meeting Minutes
- Confirming by-law edits, add signatures, and approve
- Review budget, updated timeline, and Q&A
- Continued review of SPSA by section and Q&A (if time allows)



**TODAY!!!**

## **Winter Concert**

**Advanced Orchestra, Band,  
Choir & Stage Band**

**Wednesday, December 10th  
6:00pm**

**APG Auditorium**

**All are invited!  
Free Concert**



CELEBRATE WITH APG!



# INCLUSIVE SCHOOLS WEEK

→ DECEMBER

2025

TUES  
/09

## MINI CAREER FAIR

Come meet our occupational therapist and speech therapist! Learn what they do at Tuesday lunch in the courtyard!

WED  
+THU

## ACTION THROUGH ART

What word reminds you to promote and protect belonging? Join us for a rock painting activity at lunch in the garden!

WED  
/10

## ADVISORY CONTEST

Keep your eyes out for a Google Form in advisory! The advisory classroom with the most responses win a hot cocoa party!



FRI  
/12

## KARAOKE PARTY

Join us in the SPED Lounge (Rm 117A) during Friday lunch for a karaoke party with snacks!



INCLUSIVE™  
SCHOOLS  
NETWORK





## Hello APG Families,

The Beacon department, specifically the 8th grade program, is happy to announce that we will be providing FREE grocery bags for families!

We are happy to share that **APG will receive 50 grocery bags from the SF-Marin Food Bank tomorrow, Thursday, December 11**. To help plan, we're asking families to fill the [interest form](#) now to have an accurate headcount.

**Please fill out the [Google Form link](#) TODAY if you'd like to request groceries.**

If you have any questions about this please feel free to reach out to:

- Allison Bamaca, Beacon Director, at [abamaca@bacr.org](mailto:abamaca@bacr.org)
- Danielle Shim, Community Health Outreach Worker, [shimw@sfusd.edu](mailto:shimw@sfusd.edu)

# Have you and your family been affected by the recent government shutdown?

The SF-Marin Food Bank provides home delivered groceries for eligible residents of San Francisco and Marin counties. When you are enrolled in the program, you will receive a weekly or biweekly grocery bag with fruit, vegetables, grains, and a protein like chicken or eggs.

Note: Families may participate in one food bank program at a given time (either home delivered groceries or pantry pick-up).

Fill Out Application: <https://panda.sfmfoodbank.org/homedelivery/>

Questions? Please email Ms. Danielle, [shimw@sfusd.edu](mailto:shimw@sfusd.edu)  
(Community Health Outreach Worker)

# APG ATHLETICS



Let's Cheer on our Student Athletes! See Schedules and Standings on [CIF SF](#)

**Finals! Thurs 12/11, Cheer on our Boys Basketball Team at Kezar, 5:30pm**

*THANK YOU to our Girls Basketball players, coaches, managers & families for a great season!*

Follow APG Athletics  
on [INSTAGRAM](#)

**Girls Volleyball Practice begins soon!**

★ [APG ATHLETICS GOOGLE CLASSROOM](#) ★ For all students interested in receiving information and updates about Giannini Athletics please JOIN the 2025-2026 APG Athletics Google Classroom. Click on “+” or “join class” and the class code: **xy344rs**

★ [PAPERWORK THROUGH HOME CAMPUS](#) ★ Parents / guardians will submit all athletic paperwork at [www.homecampus.com](http://www.homecampus.com). Use this [LINK](#) to create an account and complete paperwork. Use this [LINK](#) for instructions on using Home Campus. Follow this [LINK](#) for a Home Campus walkthrough video.

[Student Athlete Pre-participation Physical Form](#) Requires doctor signature. Upload Pg 4 of form to athlete's Home Campus account. [Parent Consent Form](#) If not checked off on Home Campus, one form required for each sport. *Athletes can only participate in tryouts once all forms are completed and submitted on Home Campus and they receive an official clearance from us.* For more information about athletics, please click here: [APG Athletics Information](#) For an overview of Tryouts, visit: [Tryouts](#).

Please email Athletic Director, Mr. Alfaro, at [alfaroi.c@sfusd.edu](mailto:alfaroi.c@sfusd.edu) if you have questions,

APG BEACON

# Winter Beaconfest

FRIDAY, 12/12/25  
4:45PM IN THE CAFETERIA

A celebration highlighting our  
students' artistic, athletic, and  
academic projects as well as fun  
winter-themed activities!





# LOST & FOUND!

Our APG Lost and Found is overflowing and continues to grow each day. We have unlabeled water bottles, lunch boxes, jackets, tees, and sweatshirts waiting to be claimed by the students who lost them. **Any items not picked up by Friday, December 12th will be donated to a local organization.**

STUDENTS are encouraged to check for their missing belongings. PARENTS/ CAREGIVERS are also welcome to stop by the school office, sign-in, and visit the Lost and Found area during school hours, 9:00am - 4:00pm. The Lost and Found is located in the outdoor schoolyard, near the lunch tables. Don't wait - drop by soon, before 12/12.



# 20% off **AT** Sports Basement

**BASEMENTEERS ARE  
INVITED TO A SPECIAL  
HOLIDAY SHOPPING EVENT!**

**BASEMENTEERS\* SCORE  
20% OFF:  
THURSDAY, DECEMBER 4 to  
SUNDAY, DECEMBER 14**



BURTON THE NORTH FACE HOKA  
cannondale MA GARMIN  
patagonia VUORI  
& hundreds more!

**\*NON-BASEMENTEERS STILL SAVE 11%!**

\*Even sale items! Coupon does not combine with specials, promotions or other coupons. Coupon not valid on trips, rentals, gift cards, bikes or services. See website for exclusions. POS: 10159. Valid from 12/4/25 to 12/14/25.



**Special Sale for APG!  
December 4th to 14th!**

**BASEMENTEERS GET**

# 20% off **AT** Sports Basement

**THURSDAY, DEC. 4 TO SUNDAY, DEC. 14!**

**vuori HOKA THE NORTH FACE  
patagonia Columbia**  
**AND HUNDREDS MORE!**



## FAMILY EVENT: COCOA & COMMUNITY

MEET OUR NEW FAMILY LIAISON:  
**MS. DENELLE**

COCOA | DUMPLINGS | & HOLIDAY CHEER  
TUESDAY, DECEMBER 16<sup>TH</sup> AT 4:45PM-6PM

*Location: APG Cafeteria*

**RSVP BY**  
**Saturday 12/13**

SCAN QR CODE TO  
RSVP AND LEARN HOW  
YOU CAN SUPPORT US  
IN SENDING THE APG  
STAFF ON A GREAT  
WINTER BREAK!



# JOIN US!

**Students, staff,  
parents/caregivers, &  
siblings are all welcome!**



A.P. Giannini Middle School & SF Firefighters Toys

# HOLIDAY TOY DRIVE

On now until Dec 16th, 2025  
.....



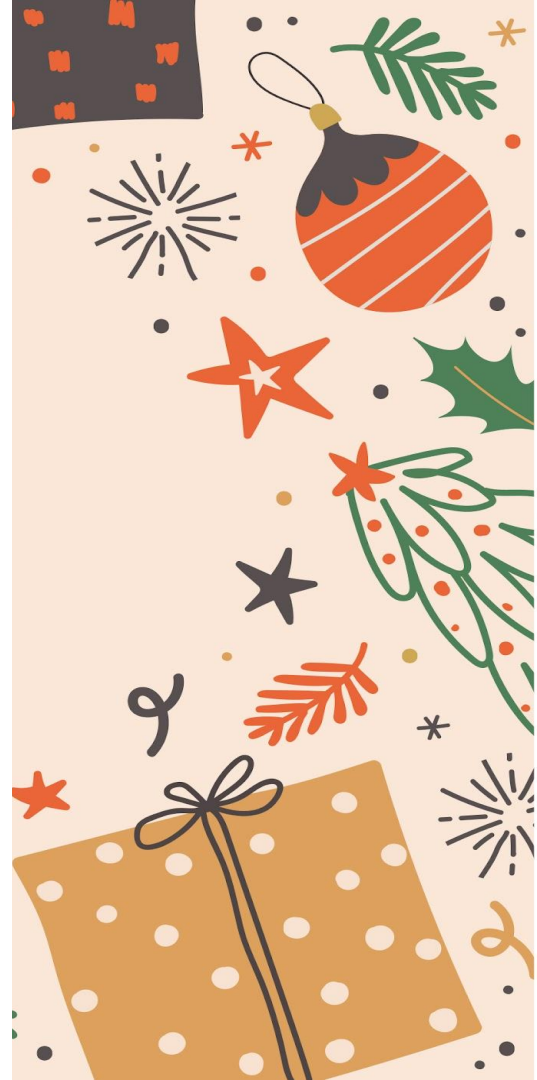
## How to Donate:

Drop off your gifts at APG's  
Wellness Center (Rm 128)

If you have any questions:  
please email Danielle  
([shimw@sfusd.edu](mailto:shimw@sfusd.edu))

## What to Bring:

- New, unwrapped toys, crafts, books and games suitable for ages 0-12.
- Please do not donate clothes, perishable or used items.





A.P. Giannini cares about our students' mental health! Refer a child to receive services from the Wellness Center.

Once a referral is made, the student will be contacted by a member of the Wellness Center for a short consultation.

**[Make a referral  
for your student!](#)**

## **APG's Wellness Center Referral Form for the '25-'26 school year**

Referrals can be made for check-ins with our social worker, outside organizations, and more.

**Sign Up for**  
**Chicken Care Here**

**Questions? Email Garden  
Teacher Ansel,  
[aschoonhoven@bacr.org](mailto:aschoonhoven@bacr.org)**



# REGISTER HERE

For this crucial session and  
ask questions about the  
SFUSD Budget

Second District

**PTA**

*everychild.one voice.*

**San Francisco**

**SFUSD BUDGET DISCUSSION  
Q & A WITH  
CHRIS MOUNT-BENITES  
DEPUTY SUPERINTENDENT OF BUSINESS  
SERVICES & OPERATIONS**



**THURSDAY 11 DECEMBER**



**TIME 6:00PM-7:30PM**

**JOIN SECOND DISTRICT PTA FOR A SPECIAL 4-1-1  
SFUSD BUDGET DISCUSSION.  
DON'T MISS YOUR CHANCE TO HEAR FROM AND  
ASK CHRIS ABOUT THE BUDGET DIRECTLY.**

**VIA ZOOM**

**[HTTPS://BIT.LY/2D-BUDGET](https://bit.ly/2d-budget)**

**LANGUAGE TRANSLATION IS PROVIDED THROUGH  
THE ZOOM CAPTIONS/TRANSLATIONS OPTION ON  
THE APP.**



# Food Resources During the Winter Break

- Visit **San Francisco Human Services Agency** at [sfhsa.org/services/food](https://sfhsa.org/services/food) or call (415) 557-5000 for information on food services: CalFresh (FoodStamps), CalFresh for Immigrants, free food locations, groceries, and meals.
- Visit **211** if you need help connecting to services, including food, health care, transportation, and more.
- Visit **SF Service Guide**, an online directory of human services in San Francisco, at [sfserviceguide.org/food-resources/form](https://sfserviceguide.org/food-resources/form) for information on food resources.
- The **San Francisco-Marin Food Bank** is operating temporary Pop-up Pantries. Use the [Food Locator](#) to find sites near you. The time and location of Pop-up Pantries may change.
- Use **Shop Simple with MyPlate** for savings with CalFresh, budget-friendly recipes, and balanced eating tips. Visit [myplate.gov/shopsimple](https://myplate.gov/shopsimple).

You can find all of this information and more at [sfusd.edu/foodresources](https://sfusd.edu/foodresources).



## Updated Information: Emergency Grocery Cards for CalFresh Recipients

November 21, 2025

- The CalFresh Emergency Grocery Card Program is available for San Francisco CalFresh recipients whose cases were active in October as a one-time emergency prepaid grocery card offered through GiveCard.
- This grocery card is *in addition to your November CalFresh benefits*. This does NOT affect your November or December CalFresh benefits, or other public benefits.
- If you ordered a physical card, you need to unlock it in order to use it when you get it in the mail. You can unlock your card online at <https://app.givecard.com/> or by calling SFHSA for help.
- Your GiveCard does not require a PIN to use. If you are asked for a PIN when using your GiveCard, just press “ENTER” to skip this step.
- Grocery cards *must be activated by December 31, 2025*. Funds must be *spent by March 31, 2026*.
- We are proud to provide this additional food support to San Franciscans in advance of the holiday season.
- If you have not received a letter or if you need help activating your virtual or physical grocery card, we are here for you. For support, reach out to:
  - SFHSA's CalFresh team at **(855) 355-5757**
  - [Family Resource Centers](#) for families with children
  - [Aging and Disability Resource Centers](#) for seniors and adults with disabilities

In November, San Francisco CalFresh recipients received a letter from us with information about a one-time emergency prepaid grocery card from GiveCard to help buy food during the government shutdown. Even though November CalFresh benefits have been restored, the City's Emergency Grocery Card Program continues to be available for San Francisco CalFresh recipients in advance of the holiday season.

- CalFresh clients must activate their grocery card by December 31, 2025.
- Call SFHSA at (855) 355-5757 if you have not received a letter but believe you are eligible for a grocery card. SFHSA can assist with activating a card and unlocking a physical card.





## Información actualizada: Tarjetas de compras de emergencia para beneficiarios de CalFresh

21 de noviembre de 2025

- El Programa de Tarjetas de Emergencia para Compras de Alimentos CalFresh está disponible para los beneficiarios de CalFresh de San Francisco cuyos casos estaban activos en octubre, como una tarjeta prepagada de emergencia única para compras de alimentos ofrecida a través de GiveCard.
- Esta tarjeta para compras de alimentos *es adicional (complemento) a sus beneficios de CalFresh de noviembre*. NO afecta sus beneficios de CalFresh de noviembre o diciembre, ni otros beneficios públicos.
- Si ha solicitado una tarjeta física, deberá desbloquearla para poder utilizarla cuando la reciba por correo. Puede desbloquear su tarjeta en línea en <https://app.givecard.com/> o llamando a SFHSA para obtener ayuda.
- Su GiveCard no requiere un PIN para su uso. Si se le solicita un PIN al utilizar su GiveCard, simplemente pulse «ENTER» para omitir este paso.
- Las tarjetas de comestibles deben activarse antes del *31 de diciembre de 2025*. Los fondos tienen que ser usados antes del 31 de marzo de 2026.
- Nos place ofrecer esta ayuda alimentaria adicional a los habitantes de San Francisco antes de la temporada navideña.
- Si no ha recibido su carta o si necesita ayuda para activar su tarjeta de comestibles virtual o física, estamos aquí para ayudarle. Para obtener ayuda, póngase en contacto con:
  - El equipo CalFresh de SFHSA: **(855) 355-5757**
  - Los **Centros de Recursos Familiares** para familias con niños
  - Los **Centros de Recursos para Adultos Mayores y Personas con Discapacidades** para personas mayores y adultos con discapacidades



## 最新資訊：加州糧食券領取者可獲得緊急食品券

2025年11月21日

- 加州食品券緊急食品卡計劃向十月仍在領取糧食券的舊金山居民開放，該計劃透過 GiveCard 提供一次性緊急預付食品卡。
- 這張食品雜貨卡是您十一月糧食券以外的額外福利。它不會影響您十一月或十二月的糧食券福利，也不會影響您其他公共福利。
- 若您訂購的是實體卡，收到後需要解鎖才能使用。您可以瀏覽 <https://app.givecard.com/> 線上解鎖，或致電 SFHSA 尋求協助。
- 使用GiveCard無需輸入密碼(PIN)。如果您在使用GiveCard時被要求輸入密碼(PIN)，只需按下「ENTER」鍵即可跳過此步驟。
- 食品雜貨卡必須在 2025 年 12 月 31 日前啟用。卡內資金必須在 2026 年 3 月 31 日前用完。
- 我們很榮幸能在節慶季節到來之前為舊金山市民提供這項額外的食品援助
- 如果您尚未收到信件，或需要協助啟動您的虛擬或實體食品雜貨卡，我們隨時為您提供協助。如需支持，請聯絡：
  - 舊金山家庭服務管理局 (SFHSA) 的 糧食券(CalFresh)團隊，電話：(855) 355-5757
  - **Family Resource Centers** 為有孩子的家庭提供家庭資源中心服務
  - **Aging and Disability Resource Centers** 為老年人和殘疾人士提供老年和殘疾資源中心服務



# Attendance

Full-Day Absence	To report a full-day student absence, use the <a href="#">ParentVUE</a> portal and select " <a href="#">Report Absence</a> ." This can be done for the current day or a future date.
Early Dismissal	Use the PTL ( <a href="#">Permit To Leave School</a> ) online form for partial day absences. You can also find it on the <a href="#">APG school website</a> under the <a href="#">Attendance tab</a> .
Late Arrival, Past Absence, or Correction?	For reporting a late arrival, past date absence or correction please email: <a href="mailto:404_apgattendance@sfusd.edu">404_apgattendance@sfusd.edu</a>

Please do not email your counselor for attendance matters

# REMINDER - SICK STUDENTS

PLEASE NOTE IT'S FLU/RSV SEASON. WE'VE HAD DOZENS OF STUDENTS SICK AT SCHOOL! WE HAVE HAD TO CALL PARENTS/CAREGIVERS TO PICK UP THEIR SICK STUDENTS FROM SCHOOL WHEN THEY SHOULD BE RESTING AT HOME.

**IF YOUR STUDENT IS SICK, PLEASE KEEP THEM AT HOME TO REST AND RECOVER.**

WE CAN KEEP EVERYONE HEALTHIER AT APG WHEN SICK STUDENTS/STAFF STAY HOME AND RETURN WHEN THEY'RE WELL. SEE THE NEXT SLIDE FOR GUIDANCE.

# EXCUSED ABSENCES & ILLNESSES

## What to do if your student does not feel well? PLEASE STAY AT HOME!

If your student is exhibiting any of the symptoms below, please have your student stay home and rest. For fever: please return to school after 24 hours of being fever-free, without medication, has passed.

Fever of 100.4° F or higher, body chills/shivers	Sore throat	Shortness of breath	Headache	New loss of smell or taste
Nausea or Vomiting	Diarrhea	Body aches	Fatigue	Cough
Pinkeye	Rash	Mouth Sores	Abdominal Pain	Runny Nose

Families may be contacted for further follow up if needed for an ill student. If you are called to pick up your sick student, please do so promptly or arrange for them to get home safely immediately. We have limited spaces in our Wellness Center/School for sick students to wait without exposing others. If you have any questions regarding the SFUSD illness protocol, please visit webpage [HERE](#) or contact School Nurse, Judy ([ZhengJ1@sfusd.edu](mailto:ZhengJ1@sfusd.edu)).

# HANDBOOK: EXCUSED/UNEXCUSED ABSENCES

## 4.1.4 Excused and Unexcused Absences

### Student and Family Handbook

Chapter 1: Welcome ▼

Chapter 2: SFUSD's Commitment to Families and Students ▼

Chapter 3: Family Resources and Rights ▼

Chapter 4: Student Academic Expectations ▲

4.1 Attendance Guidelines ▲

4.1.1 Importance of Attendance

4.1.2 Recommendations for Temporary School Exclusion Due to Illness

4.1.3 What Parents/Caregivers Should Do When a Student Will Be Absent

4.1.4 Excused and Unexcused

## Excused and Unexcused Absences

(SFUSD Board Policy 5113 [↗](#))

### Valid Excused Absences (Absences Excused by State law)

Verification of student absences is accepted only from parents/guardians/caregivers, or the student if they are 18 years old or older.

CA Education Code 48205 states that a student shall be excused from school when the absence is:

- 1 Due to the pupil's illness, including an absence for the benefit of the pupil's mental or behavioral health.
- 2 Due to quarantine under the direction of a county or city health officer.
- 3 For the purpose of having medical, dental, optometric, or chiropractic services rendered.
- 4 For the purpose of attending the funeral services or grieving the death of either a member of the pupil's immediate family, or of a person that is determined by the pupil's parent or guardian to be in such close association with the pupil as to be considered the pupil's immediate family, so long as the absence is not more than five days per incident.
- 5 For the purpose of jury duty in the manner provided for by law.
- 6 Due to the illness or medical appointment during school hours of a child of whom the pupil is the custodial parent, including absences to care for a sick child, for which the school shall not require a note from a doctor.