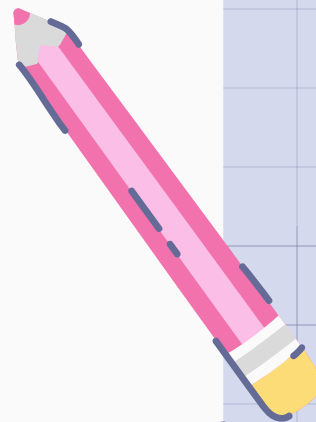




# APG Family Bulletin



August 27, 2025



# APG Calendar

[Subscribe to Calendar Here](#)

<b>8/27 - TODAY</b>	General PTSA Meeting & Principal's Update, Hybrid - School Library OR <a href="#">Zoom</a> , 6:00 - 7:00pm
<b>9/1</b>	Labor Day Holiday. APG is Closed. No School, Language Classes, or Beacon Program
<b>9/2</b>	Nominations Due for ELAC and SSC ( <a href="#">Sign Up Here</a> )
<b>9/3 - 9/5</b>	Boys Soccer, Baseball & Softball Games Begin ( <a href="#">Schedules</a> )
<b>9/4</b>	Lunch Club Rush, Students, Lunchtime
<b>9/5</b>	Staff Breakfast ( <a href="#">Donations and Volunteers Needed!</a> )
<b>9/5 - 9/7</b>	Mixto Restaurant + APG Fundraiser; 15% proceeds go to APG
<b>9/7</b>	Garden Workday in our School Garden, 12:30 - 3:30pm ( <a href="#">Many Volunteers Needed</a> )
<b>9/11</b>	APG Back to School Night, 5:15-8:00pm ( <a href="#">Volunteers Needed</a> )
<b>9/30</b>	Retake Picture Day ( <a href="#">Parent Volunteers Needed</a> )
<b>Ongoing</b>	<a href="#">Sports Basement Fundraiser</a> ; <a href="#">Chicken Care Volunteers Needed</a> ; <a href="#">Wellness Center Referrals</a>

# APG General PTSA Meeting

**Wednesday, August 27, 2025**

**6:00-7:00pm – Hybrid Format:**

**In-person at the APG Library OR Online via [ZOOM](#)**

(in person: pizza served, adults only, no child care provided)

**All parents, caregivers, teachers, & staff are welcome at our meetings!**

- ★ **Updates from the PTSA Board: Financial Review, 2025-26 Budget, Events.**
- ★ **Principal's School Updates, including new Math Curriculum.**
- ★ **Questions from you!**

**Be engaged in our supportive APG school community and attend our PTSA meeting. See you in-person or [online](#) at our meeting this evening!**





Monday, September 1st  
is a Holiday. APG and  
all SFUSD Schools &  
Offices are Closed.

There is no school,  
no language classes,  
and no Beacon Program  
on 9/1/25.

Enjoy your  
long weekend!

# SSC / ELAC Nomination - APPLY BY 9/2/25

Dear Families: A.P. Giannini is holding elections for school committees to be completed by **September 2, 2025**. [We invite you to nominate yourself](#) or others for the following:

- School Site Council (SSC) - [click here](#)
- English Learners Advisory Committee (ELAC) - [click here](#)

A [School Site Council \(SSC\)](#) must be established at **all** San Francisco Unified School District public schools. The elected members represent parents, students, community members, and school staff in school governance. The SSC is responsible for the development of the Academic Plan, and overall school site budget including any categorical funds. The SSC is expected to:

- Review the SFUSD Strategic Plan: *Beyond the Talk*.
- Review and analyze student data.
- Solicit community input and develop a needs assessment.
- Assist the principal in developing the BSC/SPSA and school site budget.
- Monitor the implementation and effectiveness of the BSC/SPSA on an ongoing basis.
- Approve the Academic Plan and school site budget before it is submitted to the District for final review and approval.

The purpose of the [English Learners Advisory Committee \(ELAC\)](#) is to advise the principal, SSC and school staff on programs and services for *English Learners*. The tasks are similar to the SSC's (stated above) and also include: the annual language census and ways to make parents aware of the importance of regular school attendance.

The school council and committees are needed to support all school programs. [You are invited to become a candidate for membership on the council and/or any or all of the committees of your choice](#). **The school & district are responsible for providing you with the information and training you need to be an effective member.** Generally, the groups meet once a month for two hours. Each member is elected for either a one or two year term. Family members often offer insights on how effective our school is in creating a positive learning environment and how well their children understand their assignments. Perspectives, and parent participation/involvement are important to our school. If you have any questions, please do not hesitate to call (628-233-7151) or email ([schoemant@sfusd.edu](mailto:schoemant@sfusd.edu)) Mr. Schoeman, Principal. Thank you!

# Multipurpose Family Income Form

## **MFIF Eligibility Impact Beyond School Meals, with this application you can:**

1. Help secure **essential funding** for your school, like support for teachers and school supplies
2. Become eligible for **discounted utilities** like internet for your home
3. Become eligible for **after-school programs** and **SAT fee waivers**
4. Receive benefits **regardless of citizenship status**

**Create an account today and apply online through SchoolCafe** (*available in English, Arabic, Chinese, Spanish, Tagalog and Vietnamese*). Allow 5 business days for processing. You will be notified via email (to the address you have on file with the Enrollment Office) that your eligibility results are ready to access.

**[Apply at SchoolCafe.com](https://www.schoolcafe.com)**



## REFERRAL FORM

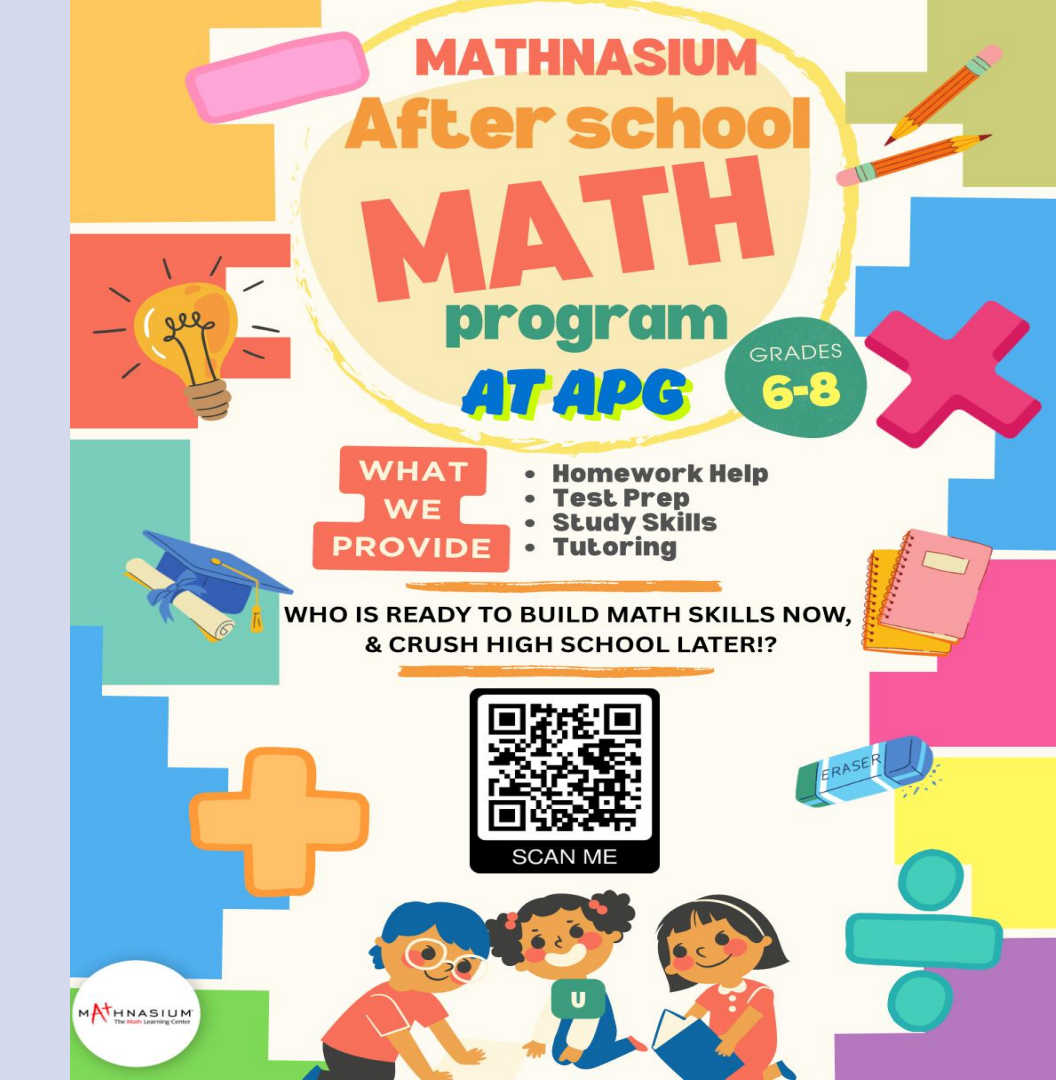
A.P. Giannini cares about our students' mental health! Refer a child to receive services from the Wellness Center.

Once a referral is made, the student will be contacted by a member of the Wellness Center for a short consultation.

**Make a referral for  
your student!**

**APG's Wellness  
Center Referral Form  
for the '25-'26 school  
year is now open!**

Referrals can be made for check-ins with our social worker, outside organizations, and more.

A colorful poster for Mathnasium's After School Math program. The background is a collage of geometric shapes in orange, green, blue, pink, and yellow. At the top, the text 'MATHNASIUM' is in red, 'After school' is in orange, 'MATH' is in large red letters, 'program' is in green, and 'ATAPG' is in blue and green. To the right of this text is a green circle with 'GRADES 6-8' in yellow. Below the main title is a red box with 'WHAT WE PROVIDE' and a list of services: Homework Help, Test Prep, Study Skills, and Tutoring. Below that is a QR code with 'SCAN ME' underneath. At the bottom, three children are shown: a boy with glasses and a red shirt, a girl with pigtails and a blue shirt, and a girl with a red shirt holding a book. Various math symbols like a lightbulb, pencils, a plus sign, a minus sign, a multiplication sign, a division sign, and an eraser are scattered around the text.

# MATHNASIUM After school **MATH** program ATAPG

GRADES  
**6-8**

## WHAT WE PROVIDE

- Homework Help
- Test Prep
- Study Skills
- Tutoring

WHO IS READY TO BUILD MATH SKILLS NOW,  
& CRUSH HIGH SCHOOL LATER!?



SCAN ME

MATHNASIUM  
The Math Learning Center

Mondays  
Math  
Tutoring

INFO

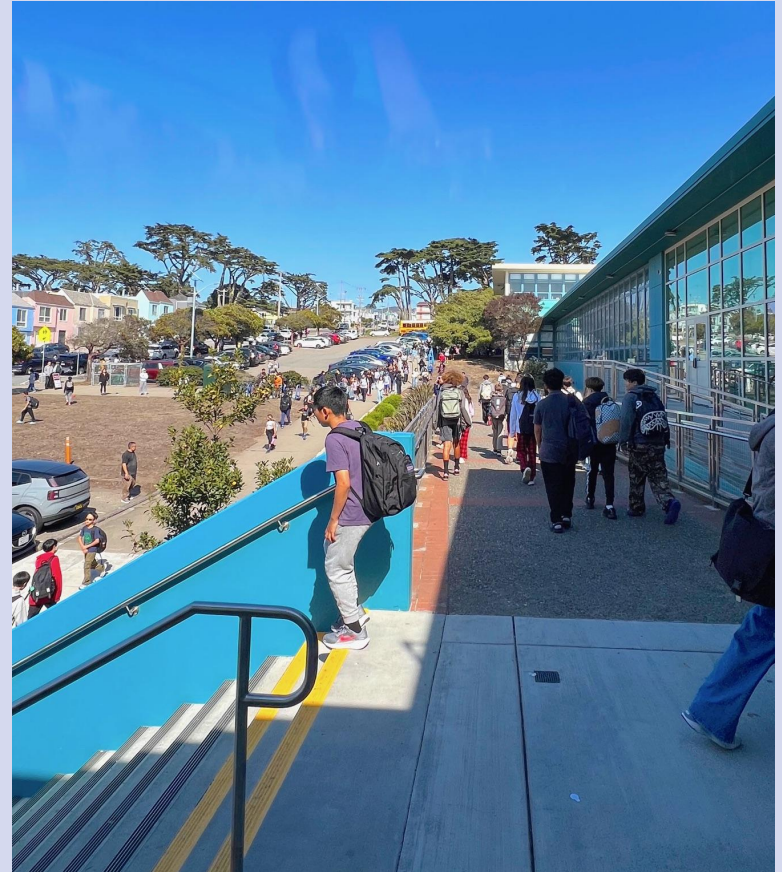
*Space is limited;  
Fee-based; begins  
in September;  
after school*

# Ensuring Student Safety

## **Student Safety is a priority at APG!**

Most of our students walk, bike, skateboard, scooter, or take the school buses/MUNI buses to and from APG.

In the first few days of school, there have already been near-misses of vehicles hitting students in crosswalks, close calls of almost- accidents with electric bikes/ scooters /cars/ buses. Many parents/ caregivers have parked illegally in the staff-only parking lots, blocked neighbors' driveways, and exhibited other unsafe behavior to endanger students during morning drop-offs and afternoon pick-ups.



# Ensuring Student Safety (2)

Please pay attention to all the students crossing the streets by our school. If your student is being driven to school, cars/motorcycles/all vehicles are NOT ALLOWED to pull into any of the WHITE ZONES along the school parking lots on Ortega Street, from 37th to 41st avenues, between 9:00am - 4:15pm.

The MUNI and district School Buses also use a large part of 37th Avenue near Ortega as a drop off/pick up zone - Please DO NOT BLOCK BUSES or cause traffic backups near the Ortega St & 37th Avenue intersection.



# Ensuring Student Safety (3)

Parking lots are for APG STAFF ONLY! Please do not park in or pull over inside our two school parking lots; these parking lots are only for our teachers and staff use all day, from 8:30am - 5:30pm.

Please do not block our neighbors' driveways on Ortega street across from school or on any other streets when dropping off or waiting for your students. Neighbors have the right to call and get you ticketed for your uncourteous behavior.

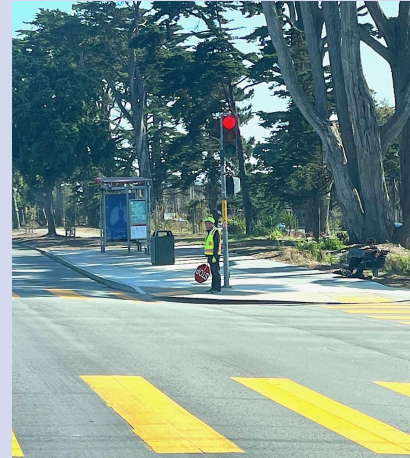


# Ensuring Student Safety (4)

There are FOUR CROSSING GUARDS from Sunset Blvd down to 41st Avenue to help out students safely walk on crosswalks - please listen to the crossing guards when they hold up their Stop Signs.

NOTE: Sunset Elementary School also has drop off at 9:30am every morning and dismissal times close to ours. There are younger students walking and crossing the streets on Ortega/41st/43rd Avenues.

Let's work together to keep all our students safe! Thank YOU for making a better effort to read the 37th Avenue and Ortega Street signs! YOU can help by staying away from bus zones, avoiding double parking, stopping for students, and pulling over for drop-off or pick-up at the correct times in the loading zones or on side streets around school.



# ATHLETICS

Congrats to all our student athletes who made it on our Girls Softball, Baseball, and Boys Soccer teams!!!

Games begin 9/3 - 9/5; See Schedules on [CIF SF:](#)    [Baseball](#)    [Softball](#)    [Boys Soccer](#)

Athletic Gear can be [ordered online at 1st Place Spiritwear HERE](#).

25% Sale Now + free shipping on \$75 or more! Sort your online gear search by official logo and sports type.



★ [APG ATHLETICS GOOGLE CLASSROOM](#) ★ For all students interested in receiving information and updates about Giannini Athletics please [JOIN](#) the NEW 2025-2026 APG Athletics Google Classroom. Click on the “+” or “join class” and type in the class code: xy344rs

★ [PAPERWORK THROUGH HOME CAMPUS](#) ★ The SFUSD Athletics Office asks parents / guardians to submit all athletic paperwork at [www.homecampus.com](http://www.homecampus.com)

- Use this [LINK](#) to create an account and complete paperwork
- Use this [LINK](#) for instructions on using Home Campus
- Follow this [LINK](#) for a Home Campus walkthrough video

[Student Athlete Pre-participation Physical Form](#) Requires doctor signature. Upload page 4 of this form to athlete's Home Campus account.  
[Parent Consent Form](#) If not checked off on Home Campus, one form required for each sport. *Athletes can only participate in tryouts once all forms are completed and submitted on Home Campus and they receive an official clearance from us.*

For more information about athletics, please click here: [APG Athletics Information](#) For an overview of Tryouts, visit: [Tryouts](#).

Please email Athletic Director, Mr. Alfaro, at [alfaroi.c@sfusd.edu](mailto:alfaroi.c@sfusd.edu) if you have questions

Follow APG Athletics on [INSTAGRAM](#)



APG Beacon Presents

# CLUB

*Rush*

**SIGN UP FOR LUNCHTIME  
CLUBS OR START YOUR OWN!**

**LUNCHTIME  
9/4/2025**

**SHOWCASE  
YOUR CLUB**

**GET CLUB  
SIGN UPS!**

**AP GIANNINI GARDEN**

 [gunterc@x.sfusd.edu](mailto:gunterc@x.sfusd.edu)

# September 5th Staff Appreciation Breakfast

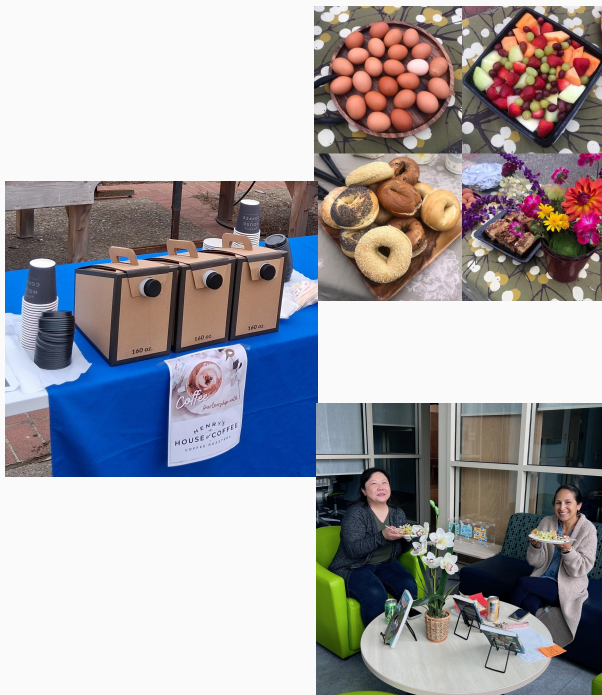
**We'd love FOOD & COFFEE donations**  
**for our Staff Appreciation Breakfast on**  
**Friday, September 5th!**

**SIGN UP HERE**

**[signup.com/go/KBYWPyH](https://signup.com/go/KBYWPyH)**

Each month, our APG Families provide a delicious breakfast buffet for our incredible teachers & staff before school starts, at 8:45-9:25AM. Drop off items by 8:00-8:30am.  
Thank you!

***Next Breakfast Dates: Oct 3, Nov 7, Dec 5***



# SUPPORT APG JOIN OUR PTSA

Join  
Today  
**ONLY \$11!!**

WHO SHOULD JOIN?  
PARENTS TEACHERS  
STUDENTS  
ALUMNI STAFF  
FRIENDS RELATIVES NEIGHBORS GRANDPARENTS  
LOCAL BUSINESS OWNERS



and it's  
Tax-Deductible!

## WHY JOIN?

### PTSA DUES HELP PAY FOR:

- School Garden
- Outdoor Education Teacher
- Classroom Supplies
- P.E. Equipment and Uniforms
- Teacher Grants
- Library and Wellness Center Supplies
- Teacher and Staff Appreciation
- Family Socials and Events

# APG



[JOINTOTEM.COM/CA/SAN-FRANCISCO/A-P-GIANNINI-MIDDLE-SCHOOL-PTSA](http://JOINTOTEM.COM/CA/SAN-FRANCISCO/A-P-GIANNINI-MIDDLE-SCHOOL-PTSA)

Read more about APG PTSA at [APGSF.COM](http://APGSF.COM)



cannondale

GARMIN



HOKA

GET UP TO

# 20% OFF AT SPORTS BASEMENT

Sports  
Basement

patagonia

and  
hundreds  
more!

## ★ SPORTS BASEMENT BASEMENTEERS ★

**Sale: from August 21st to September**

**7th**, Sports Basement has a special discount for back to school shopping. Shopping Online? Your discount is already preloaded

—<https://shop.sportsbasement.com/>! Or, use the code APGIANNINI at checkout. Shopping In-Store? Show the flier at checkout to receive your discount. POS Code: 2050009478278.

P.S. Not a Sports Basement Basementeer yet? Join today for \$25 (lifetime fee!) to unlock even more perks and benefits! 10% off for life and 10% back to local schools (like A.P. Giannini!) and non-profits. Already a member? You can update your Beneficiary to A.P. Giannini -- Update My Sports Basement Beneficiary

Ongoing: If you're a member of the Sports Basement Basementeer program, make sure to choose AP Giannini as your beneficiary. APG will receive 10% of profits every time you shop! You can do this when you join OR you can easily update your beneficiary anytime right HERE!

Enjoy delicious food at  
Mixto SF on Judah & 45th  
from Sept 5th to 7th  
and proceeds go to our  
school! Owned by an  
APG Family and local to  
our neighborhood.

**Make Your Reservation  
for Mixto SF Today!**



RESERVATIONS  
(628) 432-0401

**APG PTSA FUNDRAISER**  
*Mixto Latin Cuisine*

Support AP Giannini Middle School when you eat  
at Mixto Latin Cuisine! 15% of the weekends'  
proceeds will go to AP Giannini when you  
mention our school or show them this flyer!

**SEPTEMBER 5-7, 2025**

  
**APG**

**MIXTOSF.COM**

**15% OF PROCEEDS BENEFITING APG  
APPLIES TO DINE-IN AND PICKUP ORDERS ONLY.**

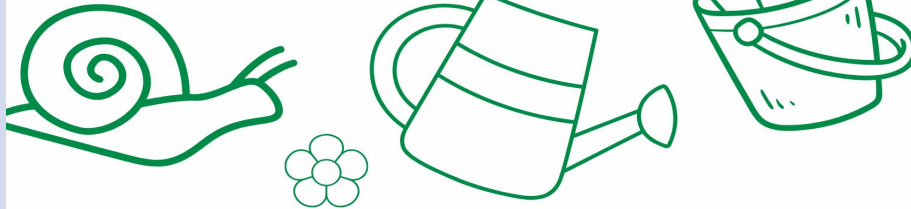
# GARDEN WORKDAY

ALL ARE  
WELCOME!

AT A.P. GIANNINI MIDDLE SCHOOL

EVERY FIRST SUNDAY

Help beautify the garden, get trained  
on chicken care, meet families!



12:30 TO 3:30 PM

3151 ORTEGA STREET, SF, CA

RSVP HERE: [HTTPS://FORMS.GLE/CVUFVJP1DFJ46PDK7](https://forms.gle/CVUFVJP1DFJ46PDK7)



A.P. GIANNINI  
MIDDLE SCHOOL  
PTSA • 家长教师学生会



**Next Garden Workday**  
**Sunday, September 7,**  
**2025, 12:30pm**

If you have any questions,  
please contact our incredible  
Garden Teacher  
Ansel Schoonhoven at  
[aschoonhoven@bacr.org](mailto:aschoonhoven@bacr.org)

 **RSVP HERE**

**Sign Up for**  
**Chicken Care Here**

**Questions? Email Garden  
Teacher Ansel,  
[aschoonhoven@bacr.org](mailto:aschoonhoven@bacr.org)**



# Attendance

Full-Day Absence	To report a full-day student absence, use the <a href="#">ParentVUE</a> portal and select " <a href="#">Report Absence</a> ." This can be done for the current day or a future date.
Early Dismissal	Use the PTL ( <a href="#">Permit To Leave School</a> ) online form for partial day absences. You can also find it on the <a href="#">APG school website</a> under the <a href="#">Attendance tab</a> .
Late Arrival, Past Absence, or Correction?	For reporting a late arrival, past date absence or correction please email: <a href="mailto:404_apgattendance@sfusd.edu">404_apgattendance@sfusd.edu</a>
Please do <u>not</u> email your counselor for attendance matters.	

# EXCUSED ABSENCES & ILLNESSES

**What to do if your student does not feel well? PLEASE STAY AT HOME!**

If your student is exhibiting any of the symptoms below, please have your student stay home and rest. For fever: please return to school after 24 hours of being fever-free, without medication, has passed.

Fever of 100.4° F or higher, body chills/shivers	Sore throat	Shortness of breath	Headache	New loss of smell or taste
Nausea or Vomiting	Diarrhea	Body aches	Fatigue	Cough
Pinkeye	Rash	Mouth Sores	Abdominal Pain	Runny Nose

Families may be contacted for further follow up if needed for an ill student. If you are called to pick up your sick student, please do so promptly or arrange for them to get home safely immediately. We have limited spaces in our Wellness Center/School for sick students to wait without exposing others. If you have any questions regarding the SFUSD illness protocol, please visit webpage [HERE](#) or contact School Nurse, Judy ([ZhengJ1@sfusd.edu](mailto:ZhengJ1@sfusd.edu)).

# HANDBOOK: EXCUSED/UNEXCUSED ABSENCES

## 4.1.4 Excused and Unexcused Absences

### Student and Family Handbook

Chapter 1: Welcome ✓

Chapter 2: SFUSD's Commitment to Families and Students ✓

Chapter 3: Family Resources and Rights ✓

Chapter 4: Student Academic Expectations ^

4.1 Attendance Guidelines ^

4.1.1 Importance of Attendance

4.1.2 Recommendations for Temporary School Exclusion Due to Illness

4.1.3 What Parents/Caregivers Should Do When a Student Will Be Absent

4.1.4 Excused and Unexcused

## Excused and Unexcused Absences

(SFUSD Board Policy 5113 [↗](#))

### Valid Excused Absences (Absences Excused by State law)

Verification of student absences is accepted only from parents/guardians/caregivers, or the student if they are 18 years old or older.

CA Education Code 48205 states that a student shall be excused from school when the absence is:

- 1 Due to the pupil's illness, including an absence for the benefit of the pupil's mental or behavioral health.
- 2 Due to quarantine under the direction of a county or city health officer.
- 3 For the purpose of having medical, dental, optometric, or chiropractic services rendered.
- 4 For the purpose of attending the funeral services or grieving the death of either a member of the pupil's immediate family, or of a person that is determined by the pupil's parent or guardian to be in such close association with the pupil as to be considered the pupil's immediate family, so long as the absence is not more than five days per incident.
- 5 For the purpose of jury duty in the manner provided for by law.
- 6 Due to the illness or medical appointment during school hours of a child of whom the pupil is the custodial parent, including absences to care for a sick child, for which the school shall not require a note from a doctor.

## Importance of Attendance

California law requires that children between the ages of 6 and 18 attend school every day. While the law does not currently apply to children below the age of six, research shows that early education (pre-school and kindergarten) is essential for future academic success. It is the parent/caregiver's responsibility to ensure that their child gets to school every day.

### Tips for Parents/Caregivers: Getting to School on Time

- Make sure your child goes to bed early and gets a good night's sleep.
- Develop a morning routine (get dressed, eat breakfast, brush teeth) and stick with it.
- Talk with your child about the importance of attending school every day for academic success.
- Arrange a time every night without interruptions for your child to do homework.

### Regular Attendance is Essential!

National and local research has shown that students with frequent absences, whether excused or unexcused, have lower literacy levels, lower grades and higher drop-out rates than students who attend school regularly.

The Governing Board believes that regular attendance plays an important role in student achievement. The Board will work with parents/guardians and students to ensure their compliance with all state attendance laws and may use appropriate legal means to correct problems of chronic absence or truancy. **Absence in excess of 10% or more days of school, whether those absences are excused or unexcused, will be considered Chronic Absence.**

For support in keeping your child in school, or if you have any questions about District Attendance Policy, please contact your school administrator or the Student Family Services Division, by calling (415) 340-1716, emailing [sflink@sfusd.edu](mailto:sflink@sfusd.edu) or submit an online form at [familylink.sfusd.edu](https://familylink.sfusd.edu).

**SCHOOL**  
**ATTENDANCE**  
**IS VERY**  
**IMPORTANT**

PARENTS & CAREGIVERS -  
PLEASE HELP MAKE SURE  
YOUR STUDENT IS AT APG  
EVERY SCHOOL DAY!

YOUR SUPPORT IS #1 IN  
ENSURING YOUR  
STUDENT'S SUCCESS IN  
ATTENDING SCHOOL AND  
LEARNING WHAT THEY  
NEED TO KNOW IN  
MIDDLE SCHOOL.



## Keep Your Child On Track in Middle and High School: Pay Attention to Attendance

Showing up for school has a huge impact on a student's academic success. Even as children grow older and more independent, families play a key role in making sure students get to school every day and understand why attendance is so important for success in school and on the job.

### DID YOU KNOW?

- Students should miss no more than 9 days of school each year to stay engaged, successful and on track to graduation.
- Frequent absences can be a sign that a student is losing interest in school, struggling with school work, dealing with a bully or facing some other difficulty.
- By 6th grade, absenteeism is one of three signs that a student may drop out of high school.
- By 9th grade, attendance is a better predictor of graduation rates than 8th grade test scores.
- Missing 10%, or 2 days a month, over the course of the school year, can affect a student's academic success.

### WHAT YOU CAN DO

#### Make school attendance a priority

- Talk about the importance of showing up to school every day.
- Help your children maintain daily routines, such as finishing homework and getting a good night's sleep.
- Try not to schedule dental and non-urgent related medical appointments during the school day.
- Keep your student healthy. If you are concerned about a contagious illness, call your school or health care provider.
- If your children must stay home because they are sick, make sure they have asked teachers for resources and materials to make up for the missed learning time in the classroom.

#### Help your teen stay engaged

- Find out if your children feel engaged by their classes, and feel safe from bullies and other threats.
- Make sure your teens are not missing class because of challenges with behavioral issues or school discipline policies. If any of these are problems, contact the school and work with them to find a solution.
- Monitor your teen's academic progress and seek help from teachers or tutors when necessary. Make sure teachers know how to contact you.
- Stay on top of your child's social contacts. Peer pressure can lead to skipping school, while students without many friends can feel isolated.
- Encourage your child to join meaningful after-school activities, including sports and clubs.
- Support your students if you notice signs of anxiety, and if needed, seek advice from your school or health provider.

#### Communicate with the school

- Know the school's attendance policy – incentives and penalties.
- Check on your child's attendance to be sure absences are not adding up.
- Seek help from school staff, other parents, or community agencies if you need support.



Revised April 2024

Visit Attendance Works at [www.attendanceworks.org](http://www.attendanceworks.org) for free downloadable resources and tools!

# Did you know that...

- Research shows that missing just two days of school each month can set students back—whether it's a kindergartener building critical grade-level reading skills, a 7th grader keeping up with core math concepts, or a 10th grader staying on track to graduate.
- And because **public schools are funded based on attendance**, strong attendance helps keep essential dollars flowing to our schools.
- **Absence is just as high in elementary school, as it is in high school.** Supporting students is also about supporting families.
- We have not yet returned to pre-pandemic levels of attendance, so **now is the time to act.**



## GREAT THINGS HAPPEN AT SCHOOL



**Be  
Here!**  
Spark SF Public Schools

