

## **SITE COMMUNITY MEETING #2 AGENDA**

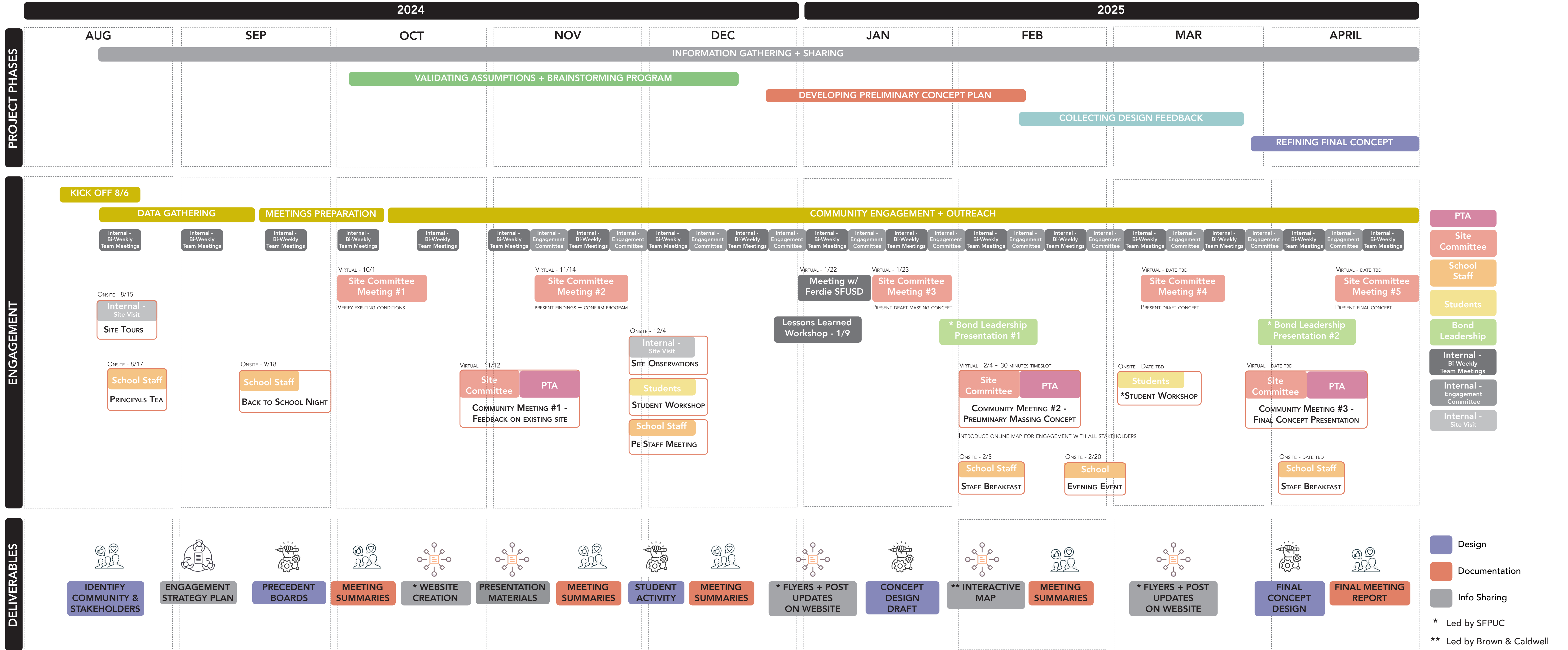
1. SFPUC WELCOME + INTRODUCTION (5 MINUTES)
2. BASE PRESENTATION OF MASSING CONCEPTS (10 MINUTES)
  - SUMMARY OF ENGAGEMENT + INSIGHTS
  - MASSING OF SPACE DISCUSSION
  - INITIAL CONCEPT IDEAS FOR KEY AREAS
3. QUESTIONS + FEEDBACK (10 MINUTES)
4. WRAP UP + NEXT STEPS (5 MINUTES)

## **OBJECTIVES**

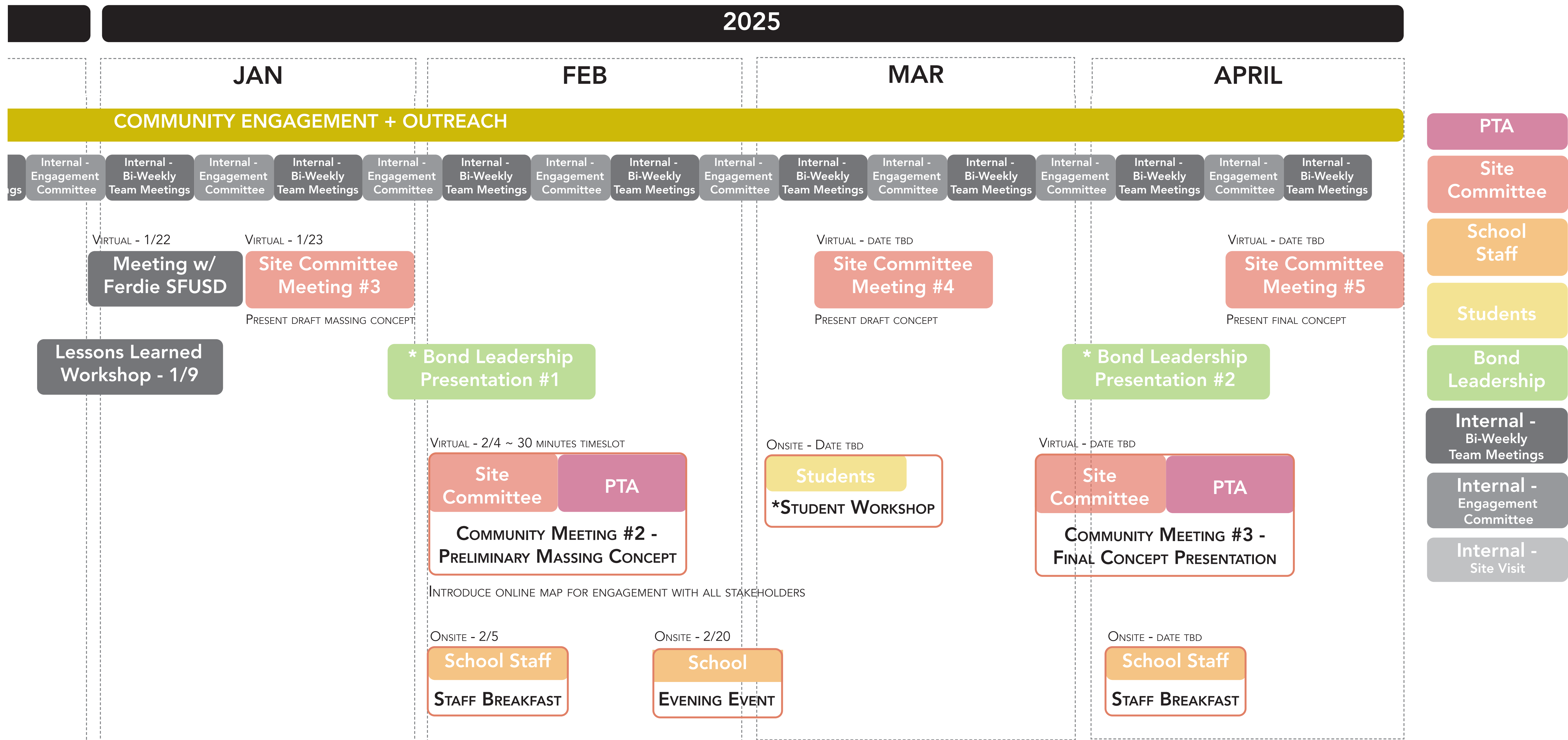
- TO CONFIRM THAT THE MASSING DIAGRAMS REFLECTS THE PRIORITIES OF THE SCHOOL COMMUNITY
- TO PROVIDE FORUM FOR BIG PICTURE FEEDBACK
- REPORT ON UPCOMING ENGAGEMENT OPPORTUNITIES

# ENGAGEMENT | A.P. GIANNINI MS GREEN INFRASTRUCTURE PROJECT

## AP GIANNINI GREEN INFRASTRUCTURE PROJECT | COMMUNITY ENGAGEMENT STRATEGY



\* Led by SFPUC  
\*\* Led by Brown & Caldwell



# KEY INSIGHTS FROM ENGAGEMENT GATHERED | A.P. GIANNINI MS GREEN INFRASTRUCTURE PROJECT

## General Yard Observations

- The yard is heavily used, with approximately 1,100 students during lunch
- No shade available
- Limited seating options
- Lunch tables are multi-use and full during lunch
- The yard is loud, with no defined quiet areas
- Limited green space
- Overcrowding and dominance of older and male students leave younger and female students with fewer options

## Safety Hazards:

- Slippery surfaces in the lower and upper yard
- Uneven surfaces and loose gravel in the lower yard cause frequent falls
- Volleyball courts are uneven and workout equipment is hazardous

## Programming:

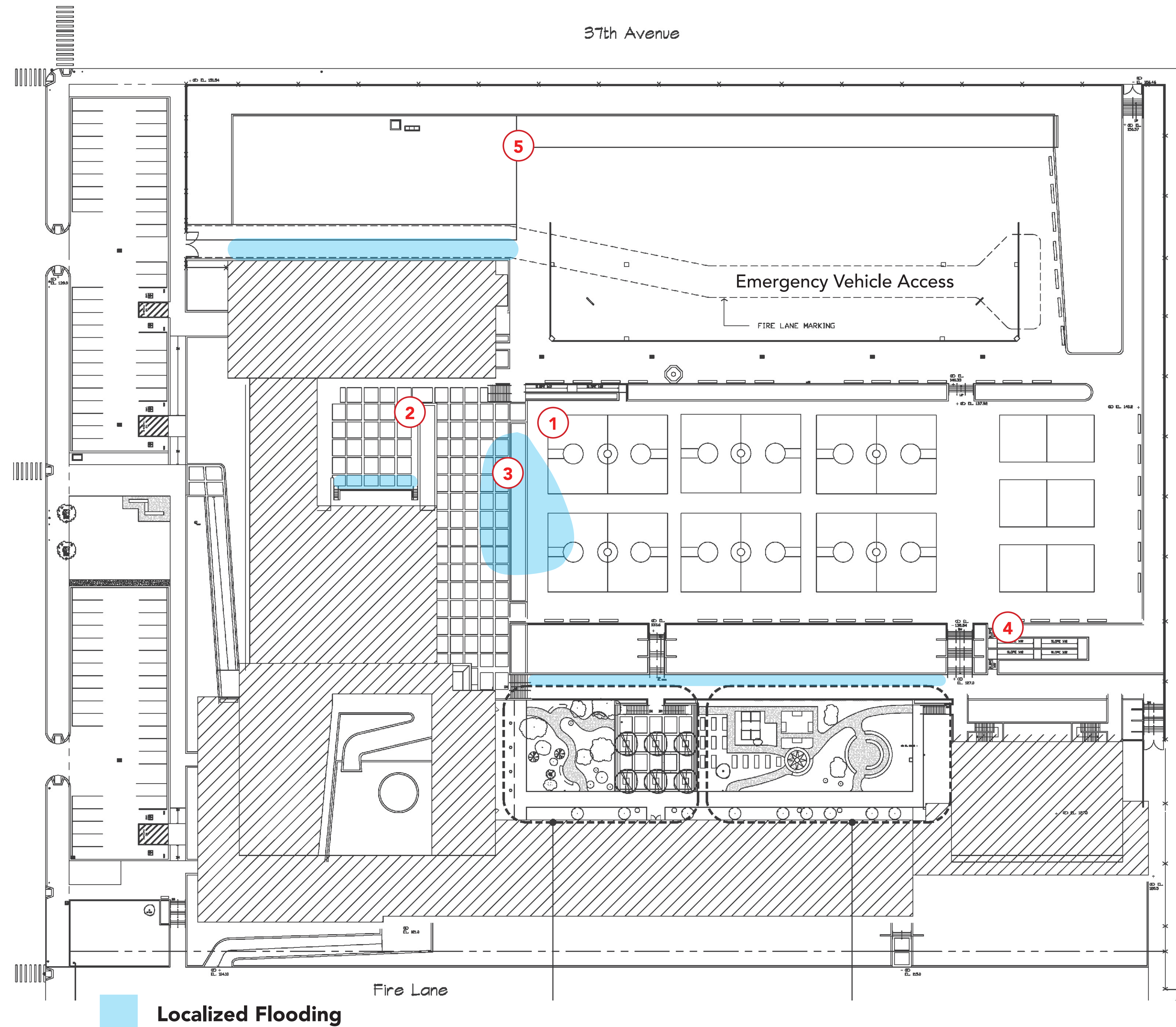
- Too many basketball courts, no diversity of play
- PE needs 6 separate areas for class, each approx. the size of 2 basketball courts
- Activities that can happen in a flexible spaces: Dance, Yoga, Workout Circuits, Park Games
- Activities that require hardscape: Bikes, Ripsticks, Basketball, Pickleball, Tennis, Handball, Floor Hockey, Four Square, Track
- PE staff prefer open, flexible spaces without barriers to accommodate various activities
- Interest in softer surfaces for football, soccer, and lacrosse
- Interest in bringing in cross training and the bike program back, but conflicts with other activities pose challenges
- Creative elements like bouldering and table tennis have been suggested

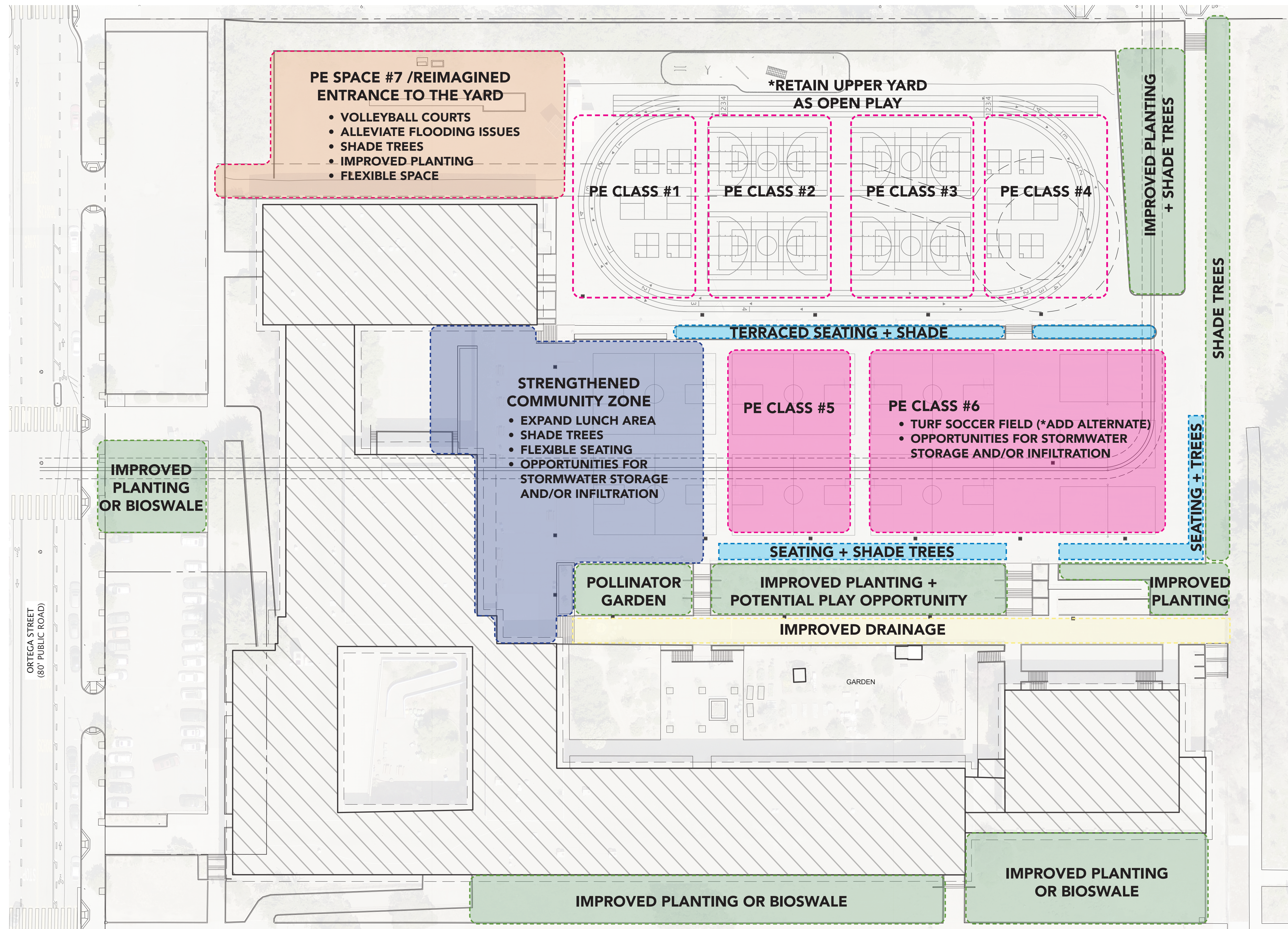
## Flooding Issues

- Pooling water along the walkway ("Lake APG"), the lower yard, lunch area, and near the long jump

## Accessibility

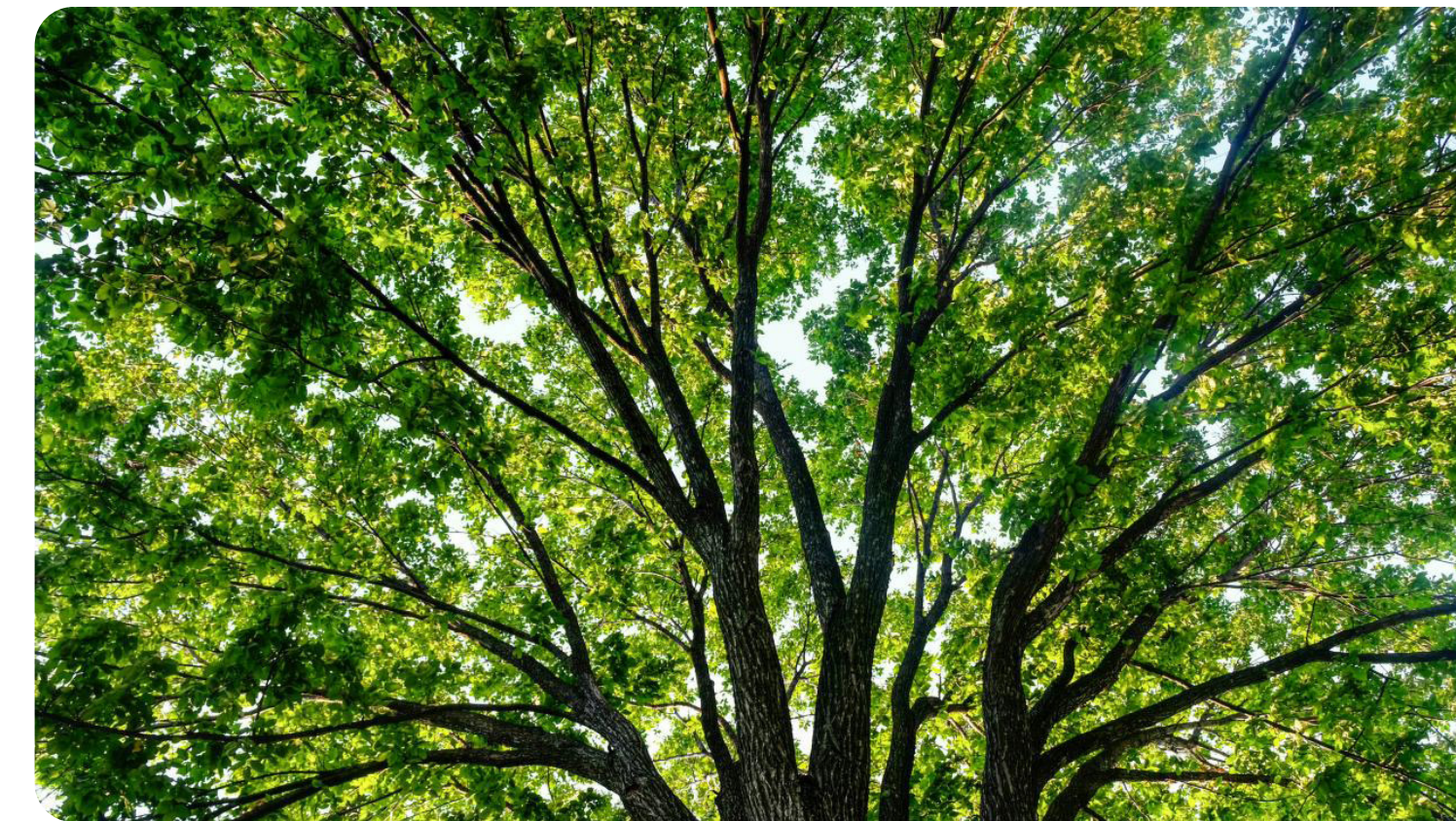
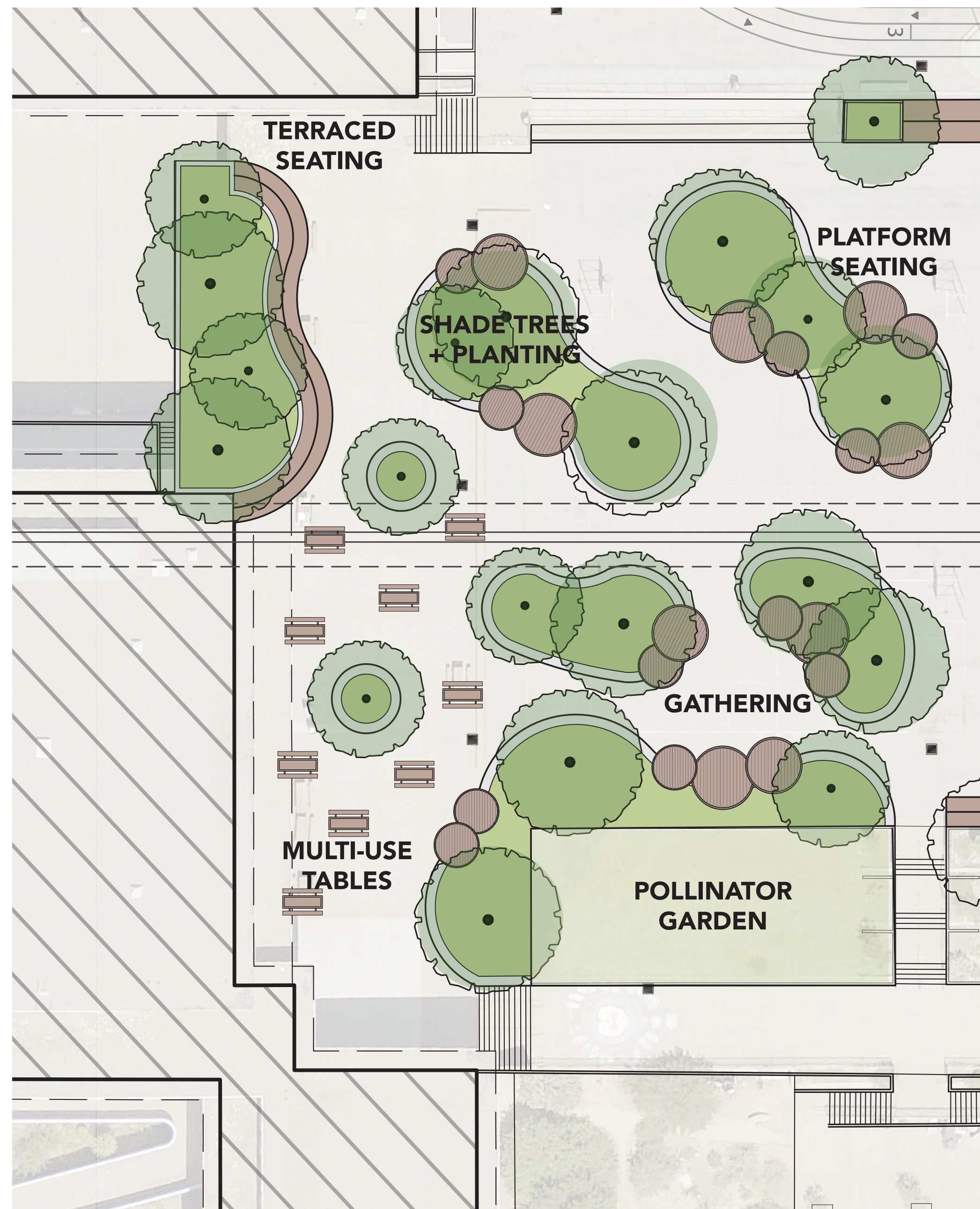
- A single, long, and steep ramp between levels restricts accessibility
- The current yard equipment storage arrangement leads to crowding at lunch



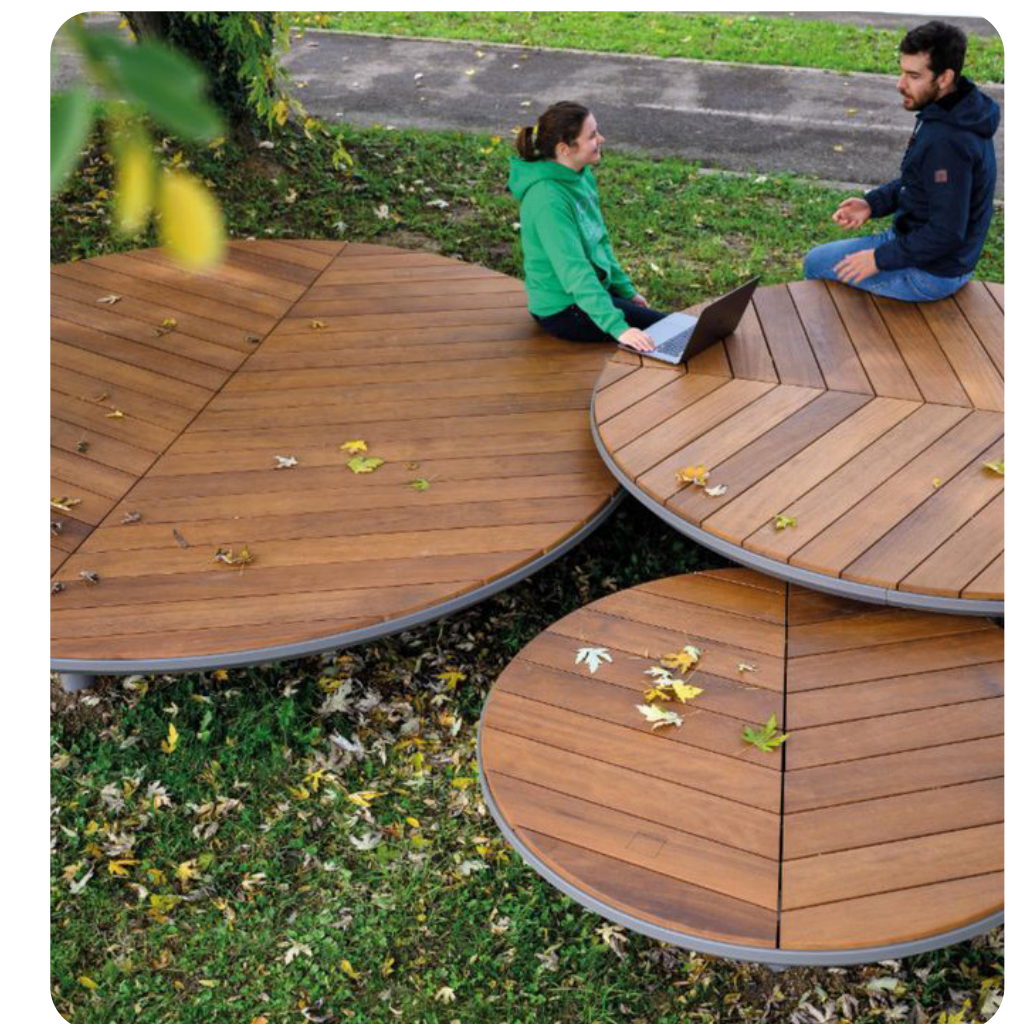
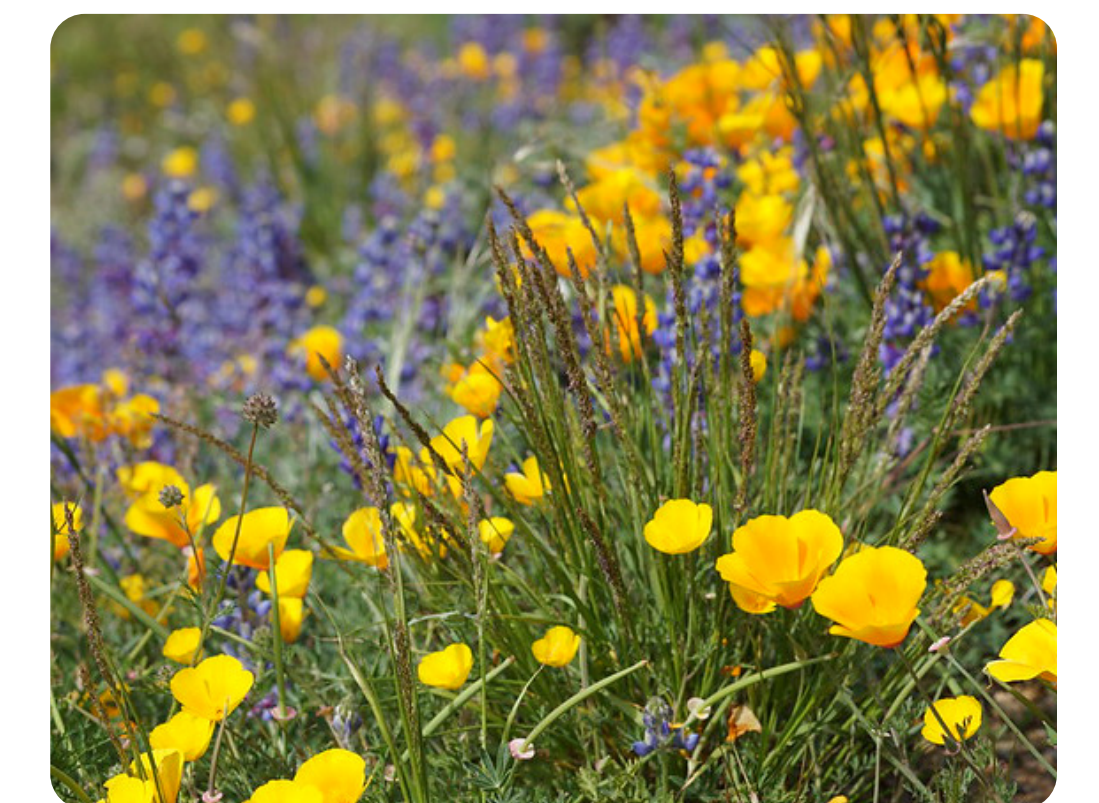


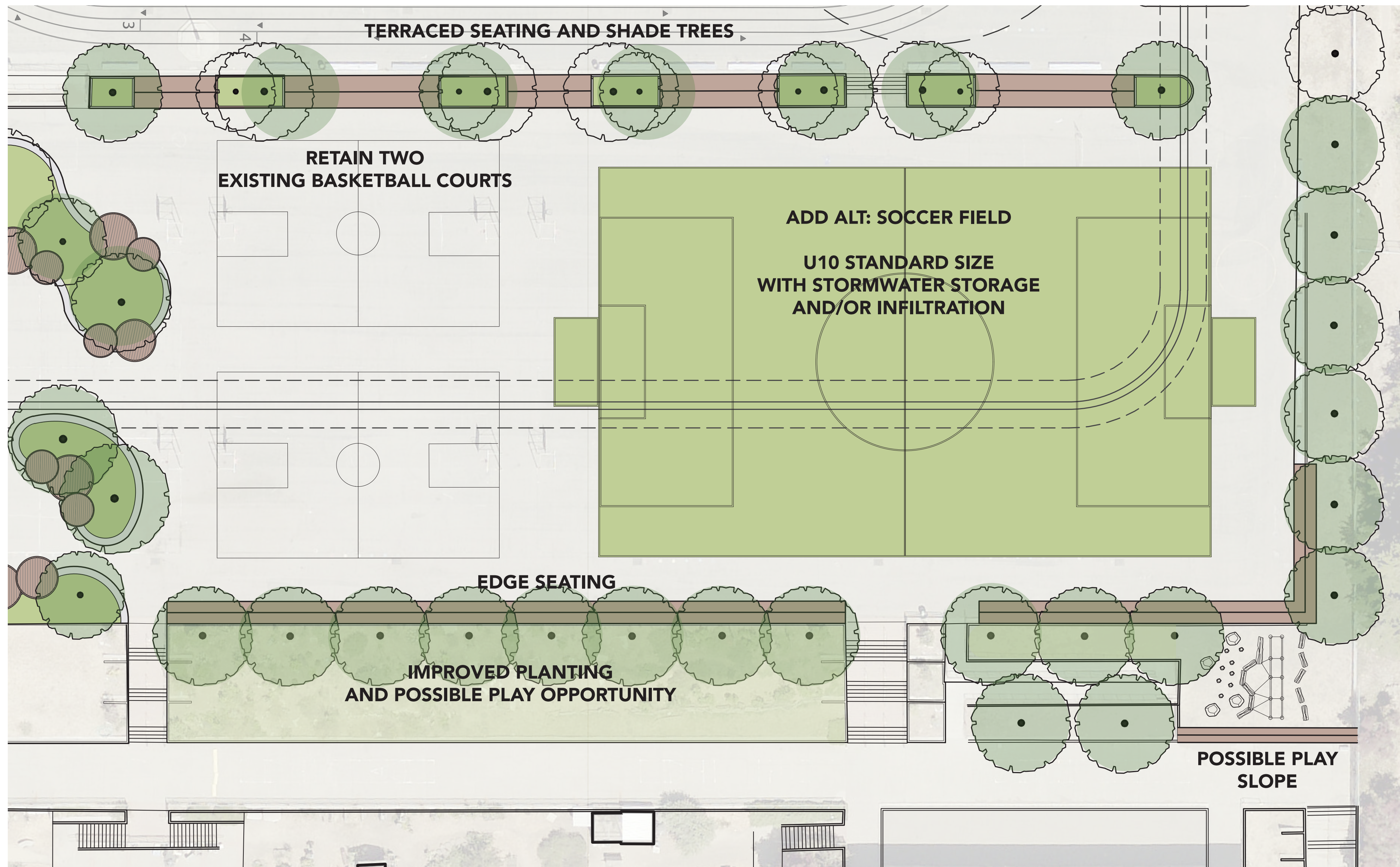
**STRENGTHENED COMMUNITY ZONE**

- EXPAND LUNCH + COMMUNITY AREA
- PROVIDE SHADE TREES
- FLEXIBLE SEATING
- OPPORTUNITIES FOR STORMWATER STORAGE AND/OR INFILTRATION
- DIVERSIFY SOCIAL SPACES FOR GATHERING + ANNOUNCEMENTS
- PLANTERS WITH SEAT EDGE
- ENHANCE ALREADY ESTABLISHED POLLINATOR GARDEN



EXISTING SITE PHOTOS

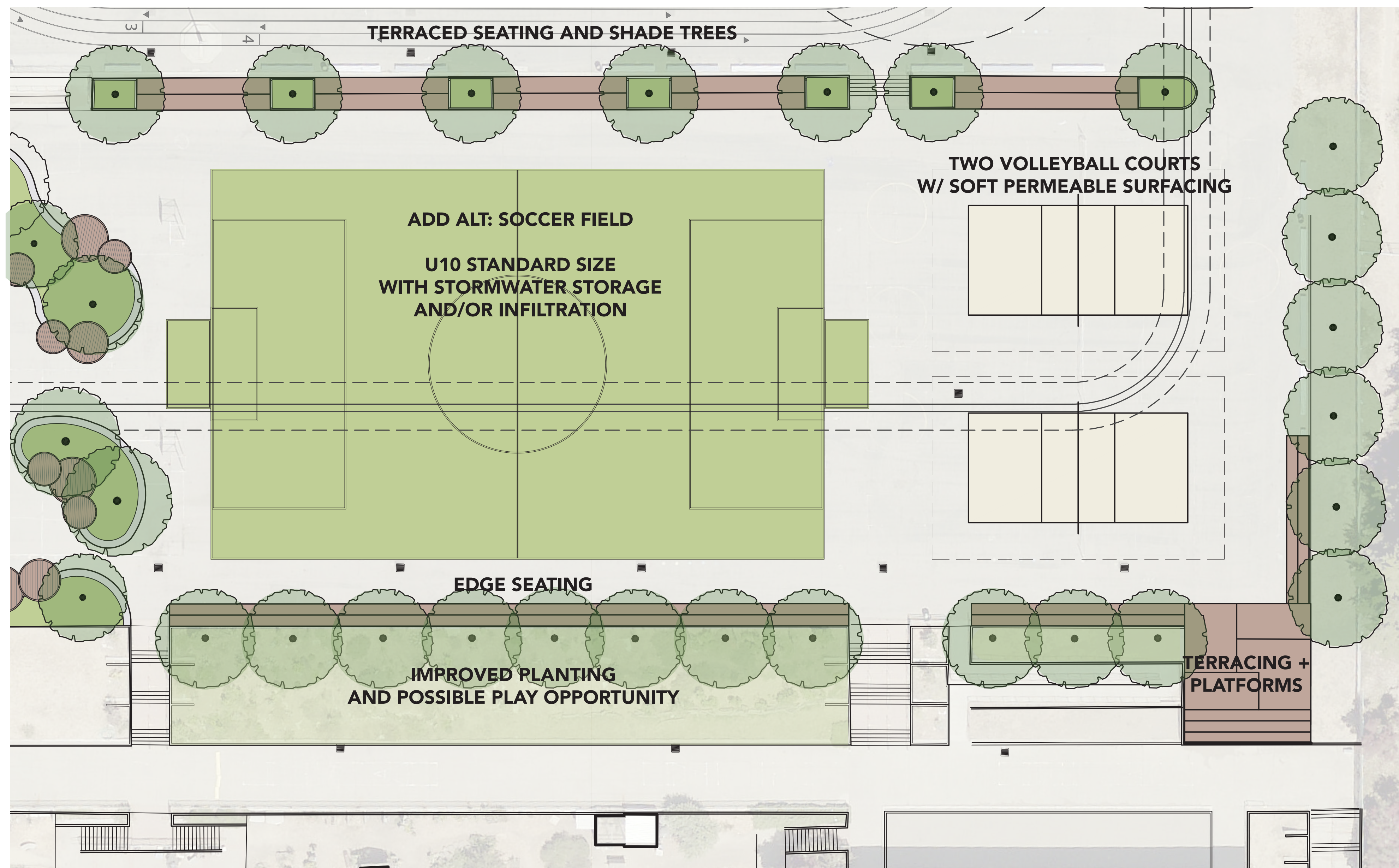




**LOWER YARD IMPROVEMENTS: MASSING OPTION 1**

- PROPOSED TURF SOCCER FIELD W/ STORMWATER STORAGE AND/OR INFILTRATION
- MAINTAIN TWO EXISTING BASKETBALL COURTS
- BREAK DOWN EXISTING SLOPE FOR TERRACED SEATING AND SHADE TREES
- EDGE SEATING
- IMPROVED PLANTING, DROUGHT TOLERANT, DURABLE SPECIES
- POTENTIAL PLAY OPPORTUNITY ON EXISTING SLOPE, SUCH AS ROPES OR OBSTACLES





**LOWER YARD IMPROVEMENTS: MASSING OPTION 2**

- PROPOSED TURF SOCCER FIELD W/ STORMWATER STORAGE AND/OR INFILTRATION
- MAINTAIN TWO VOLLEYBALL COURTS W/ SOFT PERMEABLE SURFACING
- CLEAR WALK BETWEEN LOWER YARD AND UPPER YARD
- BREAK DOWN EXISTING SLOPE FOR TERRACED SEATING AND SHADE TREES
- EDGE SEATING
- IMPROVED PLANTING, DROUGHT TOLERANT, DURABLE SPECIES
- POTENTIAL PLAY OPPORTUNITY ON EXISTING SLOPE, SUCH AS ROPES OR OBSTACLES



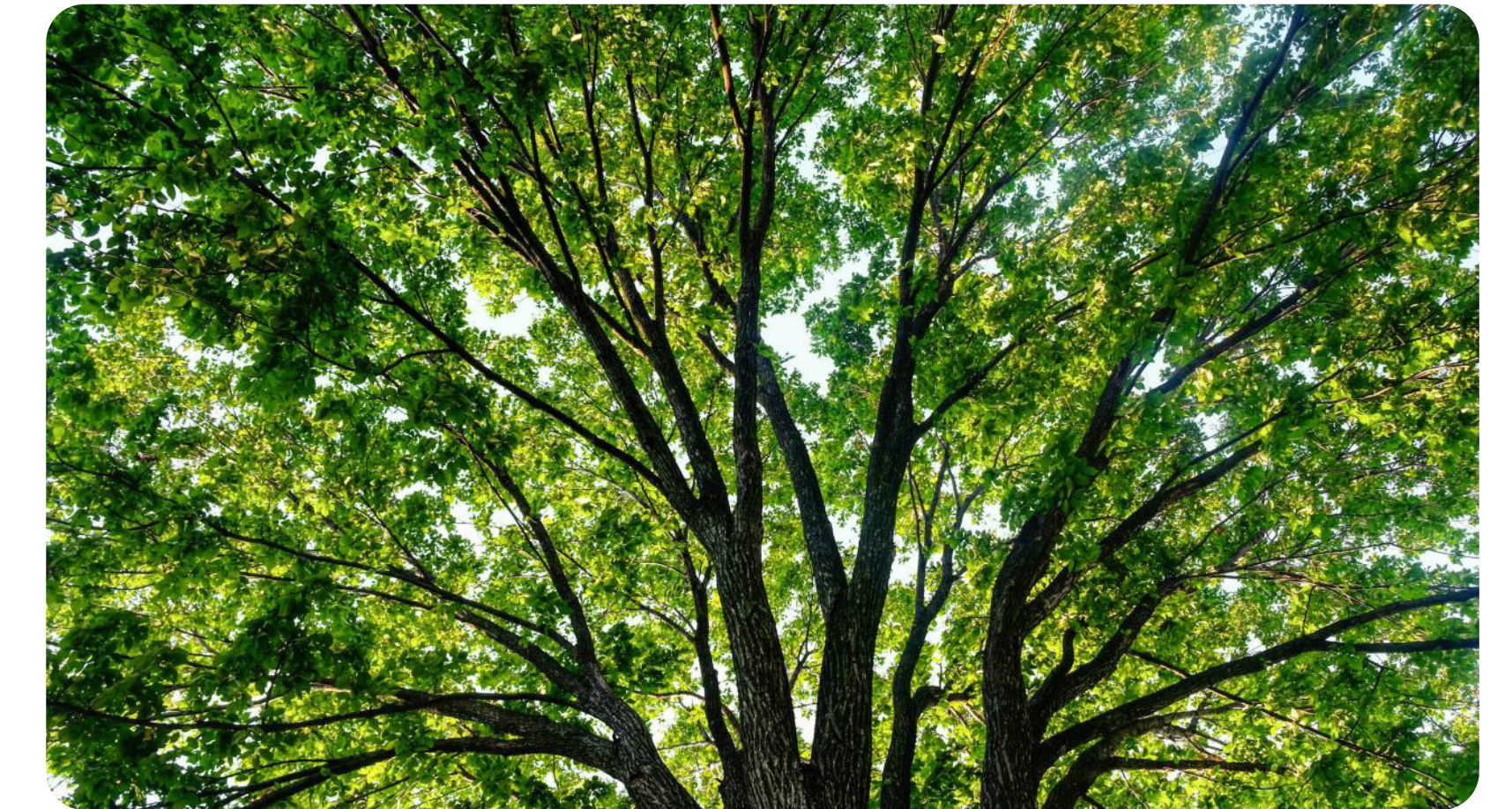
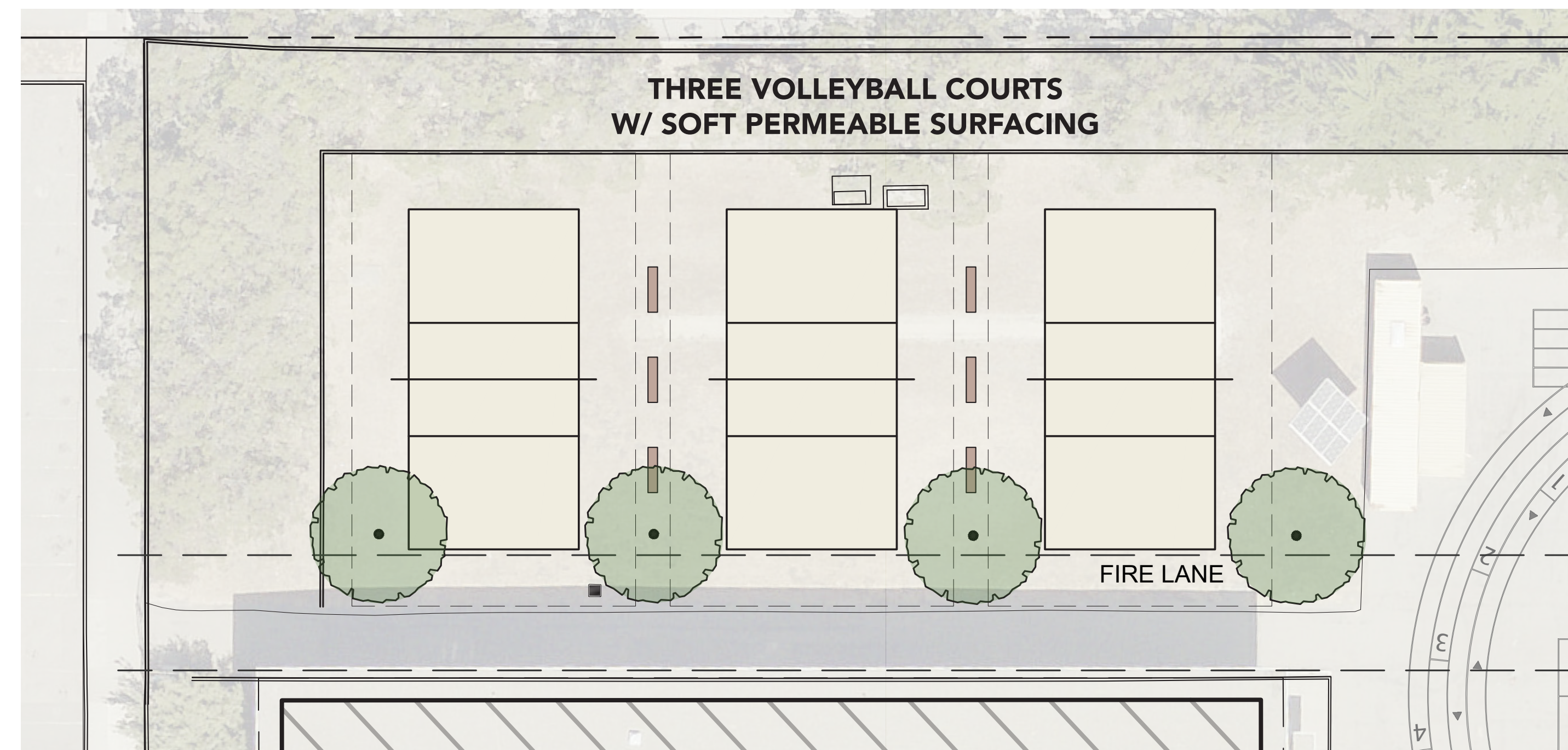
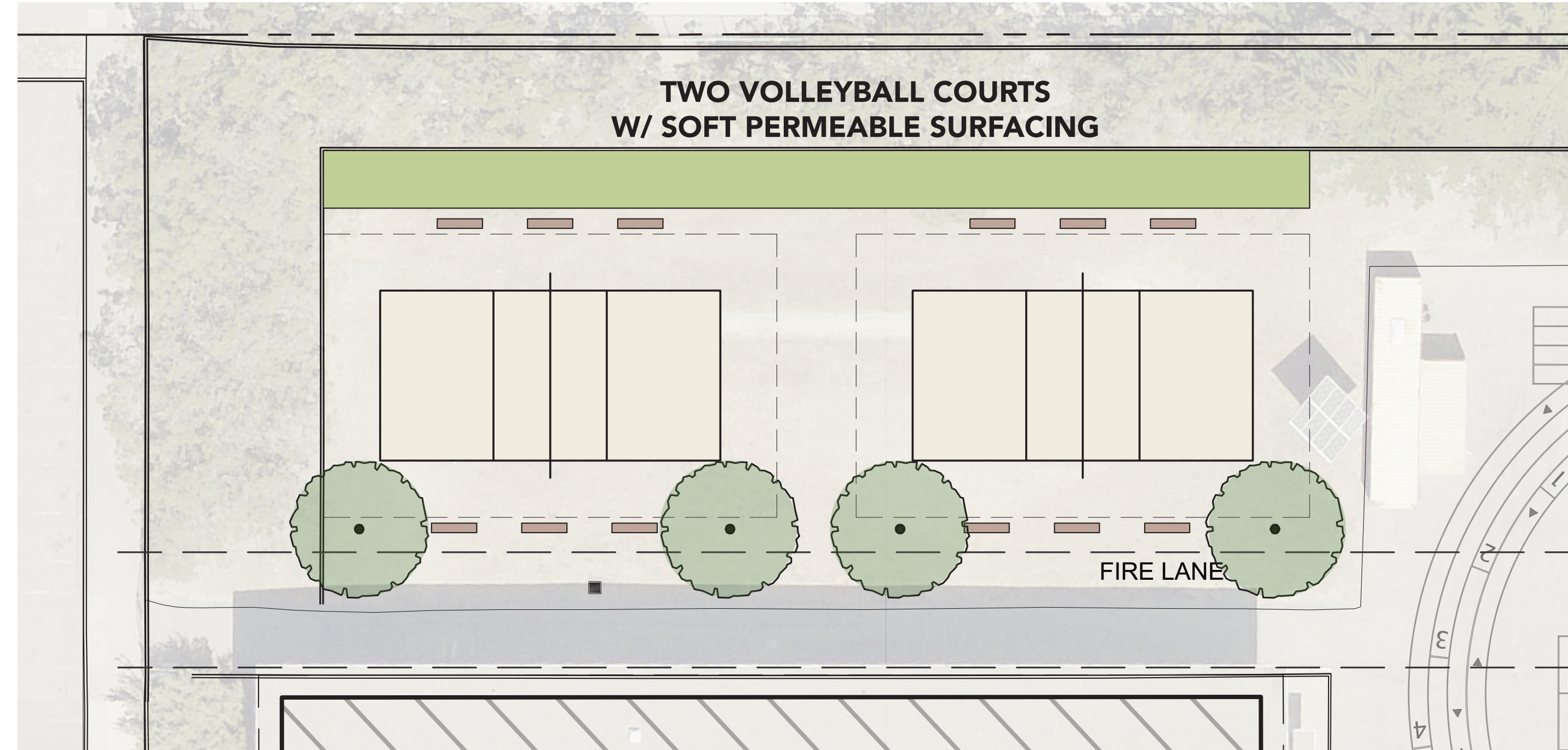


## RE-IMAGINED ENTRANCE TO THE YARD

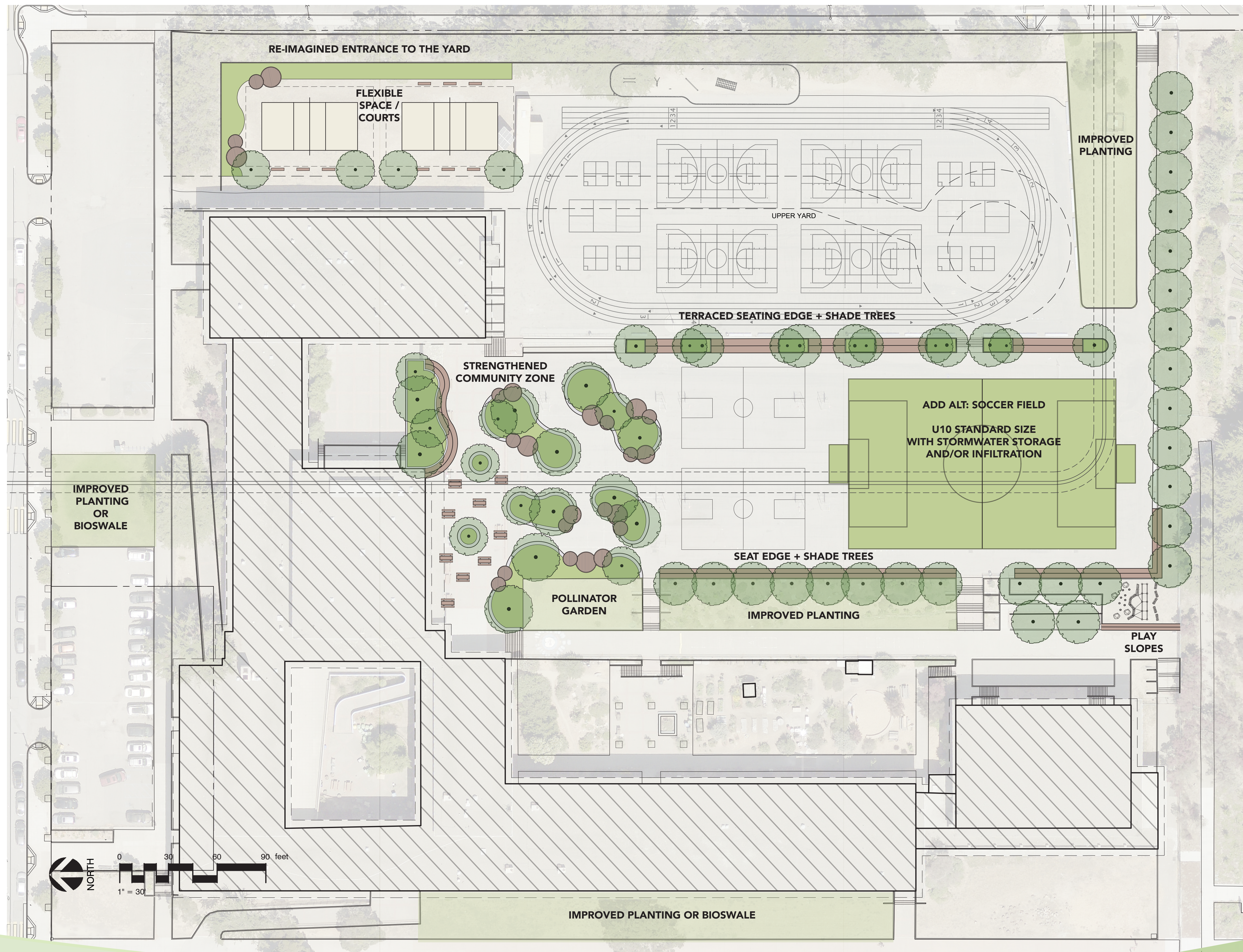
- RELOCATED VOLLEYBALL COURTS
- WELCOMING ENTRANCE TO THE YARD
- SEATING AND SHADE
- BIORETENTION PLANTERS
- ALLEVIATE FLOODING ISSUES



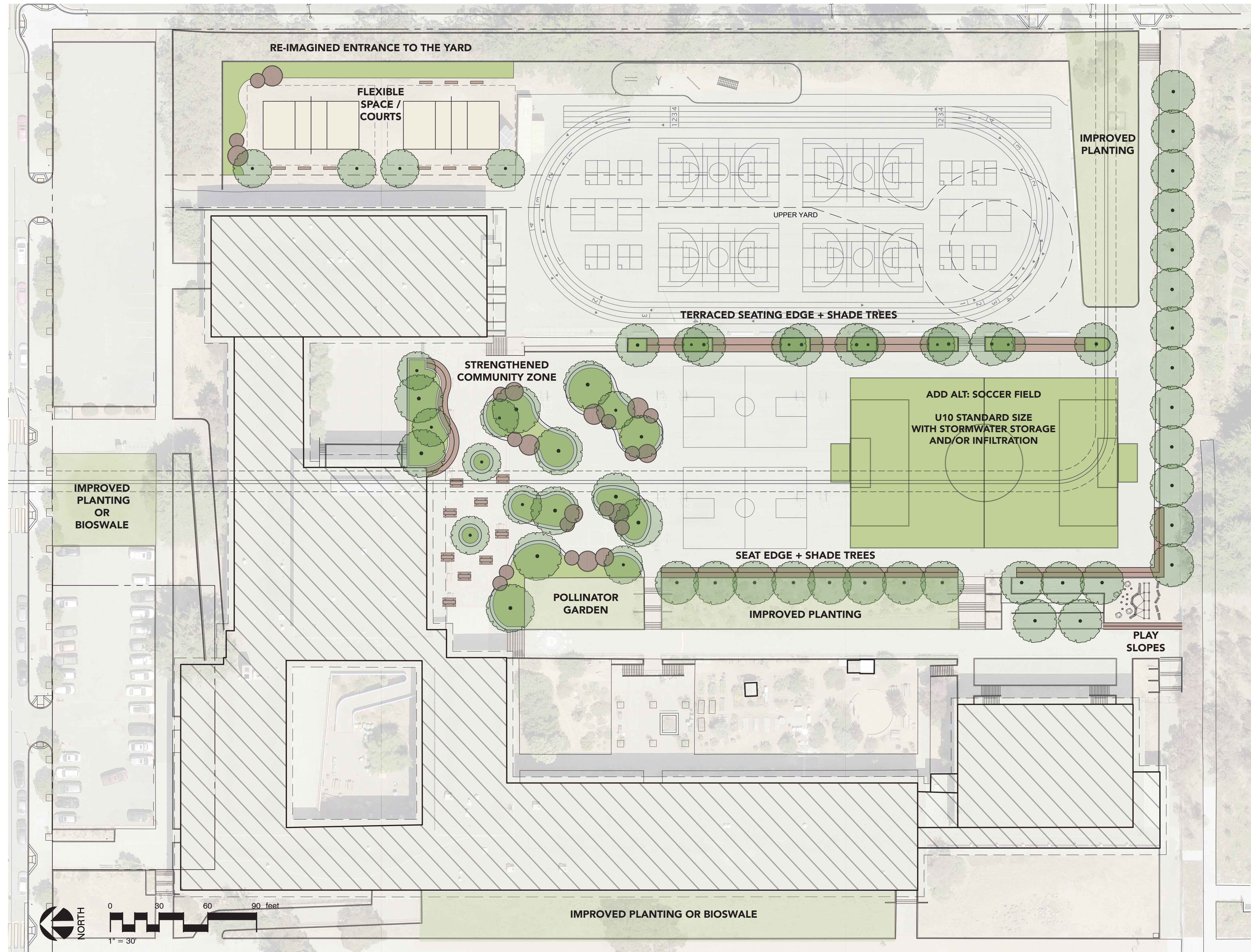
EXISTING SITE PHOTOS



# SCHOOLYARD EARLY CONCEPT | A.P. GIANNINI MS GREEN INFRASTRUCTURE PROJECT



# SCHOOLYARD EARLY CONCEPT | A.P. GIANNINI MS GREEN INFRASTRUCTURE PROJECT



1. **WHAT ARE YOUR INITIAL REACTIONS TO THE OVERALL LAYOUT AND ORGANIZATION OF THE SPACE?**
2. **DOES THE MASSING DIAGRAM REFLECT THE PRIORITIES AND NEEDS IDENTIFIED IN EARLIER MEETINGS?**
3. **DO THE PROPOSED GATHERING AREAS, PLAY ZONES, AND PASSIVE VS. ACTIVE DESIGNATIONS MEET SCHOOL'S NEEDS?**

**4. FOLLOW UP CONVERSATIONS**

- PTA PROVIDED TEACHER BREAKFAST 2/5
- STUDENT LUNCH TIME TABLING 2/7
- EVENING SCHOOL EVENT 2/20

