

APG Family Bulletin

2/26/2025

Calendar of Events

- 2/26 School Site Council meeting; 4:10 - 5:10pm, Zoom. See slide 6 for more information
- 2/26 + 2/28 Track Team - students have a mandatory weigh-in and will pick up their track uniform
- 2/28 Beaconfest Showcase in APG Cafe, 4:30-5:45pm [RSVP HERE](#)
- 3/2 Garden Workday, 12:30-3:30pm in our school garden [RSVP HERE](#)
- 3/3 - 3/7 Parent Teacher Conferences ([Early Dismissal at 2:15pm, every day](#); bus schedule changed)
- 3/12 Staff Appreciation Breakfast [SIGN UP TO DONATE FOOD](#)
- 3/13 Track Team Meet
- 3/18 General PTSA Meeting, 6:30pm, via [ZOOM](#) - All are welcome!
- 3/19 APG + Chipotle Fundraiser - Use promo code FA9FP7T or show the flyer
- 3/23 PTSA Nominations Due [SIGN UP HERE](#)
- 3/31 Deadline for ordering APG 8th Grade graduation leis, stoles & yard signs [ORDER HERE](#)
- 3/31 - 4/4 Spring Break, No School all Week
- 4/18 Last day to order your 2025 Yearbook [CLICK HERE](#)

**Take
Survey**

Ongoing: [Donate to APG PTSA](#) to support our students!

Ongoing: [Chicken Care during Holidays & Weekends](#)

Ongoing: [SF Giants Baseball Games in April + May Fundraiser; code is 'APG'](#)

Reminder: Please keep SICK students at home
(see slides 28-30 for guidance)

Parent-Teacher Conference Week

Dear APG Families,

As a reminder, our middle school parent-teacher conferences are the week of March 3rd - 7th (from 2:20-4:00pm). There will be **EARLY DISMISSAL AT 2:15PM DAILY** the whole week! Because we have 1,200 students, holding an individual parent conference for every child within the PTC window is impossible. For this reason, we prioritize conferences for students that the teachers identify. The grade-level counselors will be reaching out to families to schedule conferences with your child's teachers, or you may be interested in requesting a conference to find out how your child is doing and what you can do to partner with your child's teacher to make sure they have a successful school year. We encourage your student to participate in the conference. The conferences can either be virtual or in-person at A.P. Giannini.

Suppose you have yet to receive a request to meet for a conference from the counselors and are interested in connecting with your children's teachers to see how things are going this semester. In that case, you can schedule a conference by contacting the grade-level counselors. Our goal is to meet with all families interested in a conference. Thank you!

Contact your child's grade-level counselor to schedule the conference:

- 6th Grade - Ms. Kruger (KrugerK1@sfusd.edu)
- 7th Grade - Mr. Jang (JangJ1@sfusd.edu)
- 8th Grade - Mr. McDaniel (McDanielS@sfusd.edu)

2024-25 A. P. Giannini PTC Bell Schedule

Parent/Guardian/Teacher Conference Week

11/18 - 11/22 , 3/3 - 3/27

1°	9:30 - 10:10
<i>Passing</i>	10:10 - 10:15
2°	10:15 - 10:51
<i>Passing</i>	10:51 - 10:56
3°	10:56 - 11:32
<i>Passing</i>	11:32 - 11:37
4°	11:37 - 12:13
LUNCH	12:13 - 12:53
<i>Passing</i>	12:53 - 12:58
5°	12:58 - 1:34
<i>Passing</i>	1:34 - 1:39
6°	1:39 - 2:15



Changes to Transportation Services to Support Parent-Teacher Conferences



November 18-22, 2024

March 3-7, 2025



All elementary and middle school buses will have early dismissal during the weeks of November 18-22, 2024, and March 3-7, 2025 to support Parent-Teacher Conferences. The early dismissal will be based on the Wednesday schedule.

If, for example, a school has a 12:50 pm dismissal time on Wednesdays, during parent conference week the dismissal for Monday through Friday will be 12:50 pm. All buses, GenEd and IEP, will adhere to the revised schedule for Parent-Teacher Conference week.

Note: PK (both EES and co-located classes) are not impacted and their schedule and length of day remains the same.



The following services will be canceled during the weeks of Parent-Teacher Conferences to accommodate this change in the bell schedule.

- Elementary & middle school early releases
- Elementary, middle, and high school Therapy services after 12:00 pm
- All field trips using Zum buses

Please contact the Transportation Team if you have any clarifying questions or would like more information.

415-695-5505

School Site Council Meeting 2/26

Please join us for our School Site Council (SSC) meeting today

- Wednesday, February 26 · 4:10 – 5:10pm
- Google Meet joining info: Video call link: <https://meet.google.com/qoz-ghxv-fsf>
- Or dial: (US) +1 434-481-1316 PIN: 824 471 602#
- More phone numbers: <https://tel.meet/qoz-ghxv-fsf?pin=2868630313554>

ALL families are welcome and encouraged to attend

Agenda:

- Amend Bylaws and vote
- Budget review
- Review Goals: Algebra/math goals
- Approve transfer of Student Success Fund from supplies to Non FTE-Capital

SEL/Culture-Climate Survey

Dear Parents/Caregivers,

SFUSD measures school quality by looking at the school's climate as well as the academic performance and social-emotional skills of the school's student body. By **March 12, 2025**, you are requested to participate in an online SEL/Culture-Climate Survey.

The family Culture-Climate survey is one important way to help us understand how families feel about our school and their child's learning, and how APG can improve. It is very important that we get as many of our families to respond as possible, so that we have data that truly represents the whole school and not just a few people. Everyone's voice is important! There are no right or wrong answers to any of these questions. We just want to know everyone's honest opinion. Results of the survey will be used to assess our programs and initiatives; all reports will be summarized using aggregate data, not individual student/family data.

Some key things to know about the family survey:

- The survey is voluntary and confidential;
 - **The survey is available online and is translated into Spanish, Chinese, Vietnamese, Tagalog, Arabic and Samoan.**
- To review/complete the survey questions, visit: <http://bit.ly/2S3HdoJ>**
- This link will work on a computer or any mobile device.
 - Please DO NOT tweet or post this link on other social media outlets as it is specific to our school.
 - Parents with multiple children in this school should fill out one survey for each child. If you have children in another school, you should fill out a survey at that school as well.

Thank you for your support and cooperation.



APG ATHLETICS

FOLLOW US ON
INSTAGRAM

TRACK & FIELD

Track has mandatory events this week - read them all in HomeCampus
Track Meets begin 3/13

[APG Track & Field Schedule](#)

GIRLS VOLLEYBALL TEAM!

Thank you to our Girls Volleyball student athletes, coaches, and families for a great season!

APG ATHLETIC GEAR Show your school team spirit! Order your APG Athletic Team Tees & Gear [HERE!](#)

APG ATHLETICS GOOGLE CLASSROOM

For the latest info and updates on Giannini Athletics, please have your child (using their SFUSD student account) join the [APG Athletics Google Classroom](#). Click on the “+” or “join class” and type in the class code: **ommj472**

*** PAPERWORK THROUGH HOME CAMPUS ***

The SFUSD Athletics Office asks parents/guardians to submit all athletic paperwork at www.homecampus.com.

- Use this link to [create an account and complete paperwork](#)
- Use this link for [instructions on using Home Campus](#)
- Follow this link for a [Home Campus walkthrough video](#)

[Student Athlete Pre-participation Physical Form](#) Requires doctor signature. Upload p. 4 to Home Campus account.

[Parent Consent Form](#) If not checked off on Home Campus, one form must be submitted for each sport.

Athletes can only participate in tryouts once all forms are completed and submitted on Home Campus and they receive official clearance from us.

Questions? Email Athletic Director, Mr. Alfaro, at alfaroi.c@sfusd.edu

For more info about athletics, click [HERE](#) For an overview of Tryouts, please click [HERE](#)

PUC Project - your input is needed!

As you may have heard, SFUSD and SFPUC are partnering on a new **green schoolyard project at AP Giannini Middle School.**

The APG schoolyard will be redesigned with new landscape features that capture stormwater, add green space, and enhance student experience of the schoolyard. The project is currently in conceptual design phase and the project team would like your feedback!

Please click on the link or scan the QR code below to view the draft concept plan for the schoolyard and provide your input.

For additional information on this project, including community engagement completed so far please visit the website at www.sfpuc.gov/apgiannini

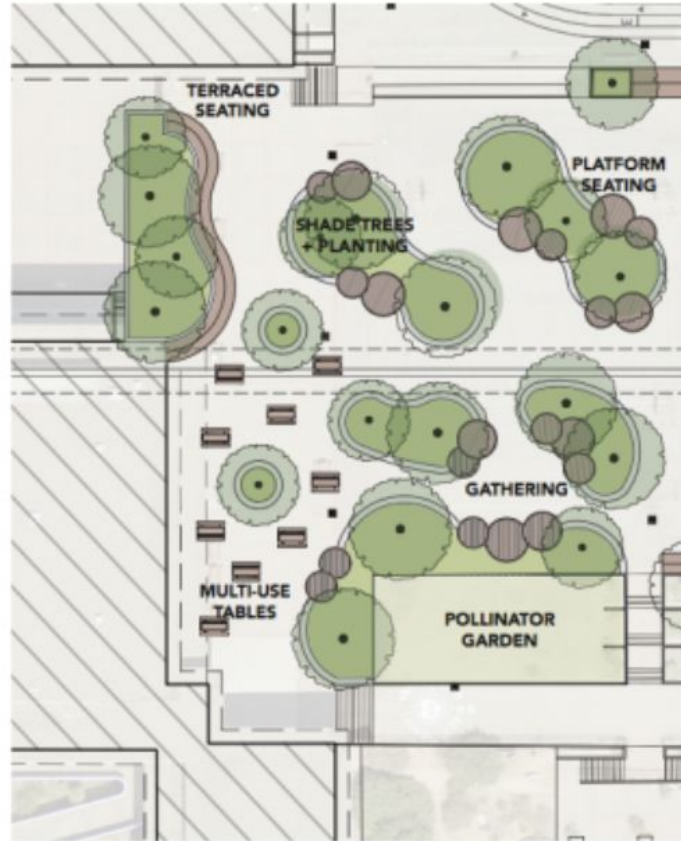
Concept Design Feedback Link:

<https://experience.arcgis.com/experience/42beb80e63964ef8a0defd214f4cc126>



STRENGTHENED COMMUNITY ZONE

- EXPAND LUNCH + COMMUNITY AREA
- PROVIDE SHADE TREES
- FLEXIBLE SEATING
- OPPORTUNITIES FOR STORMWATER STORAGE AND/OR INFILTRATION
- DIVERSIFY SOCIAL SPACES FOR GATHERING + ANNOUNCEMENTS
- PLANTERS WITH SEAT EDGE
- ENHANCE ALREADY ESTABLISHED POLLINATOR GARDEN



EXISTING SITE PHOTOS



FILL OUT THE SURVEY TO GIVE SFPUC YOUR FEEDBACK ABOUT THE APG GREEN PROJECT

APG JAG FUND

GOAL \$125,000

\$86,000

DONATE TO SUPPORT VITAL SCHOOL PROGRAMS

STUDENT, TEACHER, AND STAFF SUPPORT

OUTDOOR EDUCATION	CLASSROOM SUPPLIES
WELLNESS CENTER	PROJECT GRANTS
TECH SUBSCRIPTIONS	P.E. EQUIPMENT
FAMILY SOCIALS	SCHOOL EVENTS
GRADUATION & PARTY	
TEACHER APPRECIATION	

tinyurl.com/APGdonate

[JAG FUND UPDATE: WE NEED YOUR HELP!](#)

We've raised **\$86,000** toward our **\$125,000** goal.

A huge shoutout to everyone who has contributed to our [Jag Fund](#) already - thank you!

We're making great progress, but **we need YOUR HELP TO RAISE \$40,000** more to reach our annual goal.

If YOU have NOT had a chance to contribute yet, TODAY is the perfect time to jump in to get us to 100% of our goal.

Whether it's a one-time gift or a monthly pledge, every dollar counts. Your support brings to life amazing programs like outdoor science education, a thriving garden, family socials, classroom supplies, support for the Wellness Center, P.E. uniforms, teacher grants, and staff appreciation events.

Together, let's reach our goal and make APG even stronger for our students! Donations can be made through [PayPal](#) or by a Check (made to 'APG PTA').

[\[Learn more here.\]](#)

Thank you for being a vital part of our public school community. Let's do this, Jaguars!

tinyurl.com/APGdonate

REMINDER from our Wellness Center!

Parents & Caregivers: use this QR code to request wellness support for your student. Or students can refer themselves.

No smartphone? Use this [LINK](#)

Refer a student for MENTAL HEALTH SUPPORT



REFERRAL FORM

A.P. Giannini cares about our students' mental health! Refer a child to receive services from the Wellness Center.

Once a referral is made, the student will be contacted by a member of the Wellness Center for a short consultation.



We are looking for APG parents who are willing to be interviewed about their daughter's middle school experience to inform a new wellness program to support girls' mental health. [Girls Who Connect](#) is a mental wellness startup founded by Michelle Chan (*SFUSD alumna and current Northwestern Kellogg MBA student*). Michelle is collaborating with APG to explore a potentially new, play-based, after school program for middle school girls to spark joy and creativity. If you are interested in speaking with Michelle to support her program and research, please [fill out this FORM BY 2/26](#) or email today at: michelle.chan@kellogg.northwestern.edu. Thanks!



APG BEACON

BEACONFEST CYCLE 2

FEB 28, 2025 AT 4:30PM

AP GIANNINI CAFETERIA

JOIN US TO SEE
OUR WONDERFUL
STUDENTS' WORK
THIS FRIDAY 2/28!

[RSVP HERE](#)

Garden Workday, Sunday, March 2, 2025, 12:30-3:30pm

[\[RSVP HERE\]](#)

A.P. Giannini Middle School

GARDEN WORKDAYS

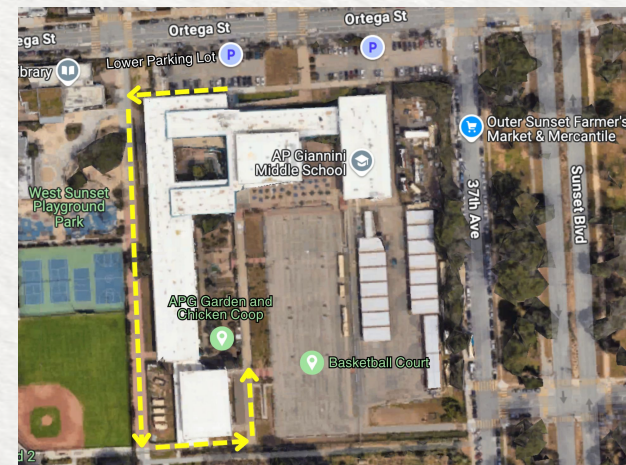
12:30 to 3:30 PM,
Every first Sunday of the month



The illustration features a green watering can, a trowel, a green apron, a pair of green gloves, a brown bag of soil, a corn cob, and a carrot. A QR code is centered in the upper right of the illustration area.

Our APG Garden Workdays take place every first Sunday of the month from 12:30 to 3:30 PM at the APG Garden (3151 Ortega Street, San Francisco, California). You may park in the staff parking lot and enter the school near West Sunset Playground *see below for directions*

If you have any questions, please contact Garden Teacher, Ansel Schoonhoven (707-980-4321, aschoonhoven@bacr.org)



A.P. Giannini Middle School

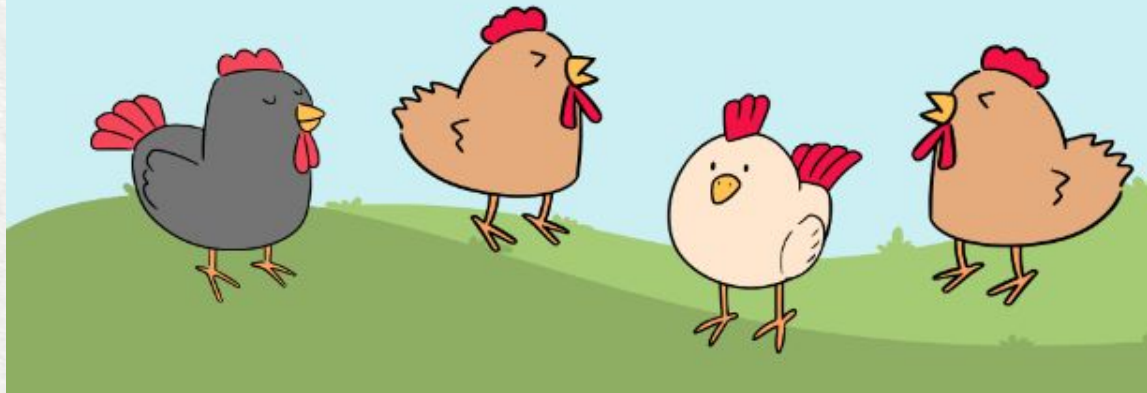
Chicken Care

Weekends and School Holidays

Feed the chickens

Clean the chicken coop

Take fresh eggs home!



We need YOU!
Help out on
weekends and
holidays with the
chickens!

[Sign Up for Chicken Care Here](#)

Questions? Email Garden Teacher Ansel, aschoonhoven@bacr.org

PARENT VOLUNTEER OPPORTUNITY

Garden Supervision, Lunchtime on Tuesdays and Thursdays



Tasks include supervision with the possibility of supporting Teacher Ansel with Garden Club. [Sign up HERE.](#)

- Tuesdays, 12:25 to 1:05 PM
- Thursdays, 12:42 to 1:22 PM

[Sign Up Here](#)

Please consider signing up for a day, or many days!

More Volunteers needed every week

JOIN OUR
WONDERFUL APG
PTSA BOARD!

NOMINATIONS OPEN
FOR THE 2025-2026
TERM POSITIONS.

READ MORE HERE



A.P. GIANNINI MIDDLE SCHOOL PTSA · 家长教师学生会

2025-2026 APG PTSA Board Nomination Form

We invite you to nominate yourself or other PTSA members to join our fabulous 2025-2026 APG PTSA Board by March 23rd, 2025. The open positions are listed below. All positions have One-Year terms and range from 2 to 12 hours of commitment each month. See more here: <https://bit.ly/2tI4qRj> . We'd like YOU to help and represent our community of 1,200 students, 120+ staff, and 1,150 families.

Get ready to
celebrate your
8th grader!

~

Leis, Stoles &
Yard Signs now
available.

~

Use the
QR Code or
ORDER HERE

<https://apgms-leis-fundraiser.square.site/>

Order by 3/31 • Sales benefit APG!

A. P. GIANNINI MIDDLE SCHOOL

2025
LEIS
FUNDRAISER

Congratulations

PRICES

Our price start at \$12
for complete pricing
and more style please
scan our QR code

SCAN TO ORDER



PARENTS:

Order your student's
leis through our
fundraiser & help the
PTSA
raise funds
for our students



CONTACT NKC LEIS FOR QUESTIONS OR
CONCERNS

n.k.c.leis@gmail.com
Facebook: @nkcleis
Instagram: @nkcleis
(925) 306 2564



APG

x



FUNDRAISER ALERT!

Use [THIS LINK](#) to buy tickets to April or May Giants games and APG will receive \$5 per ticket!

Use this code: **APG**

SAVE THE DATE

SUPPORT YOUR SCHOOL BY JOINING THE GIANTS AT ORACLE PARK FOR ONE OF THE AVAILABLE FUNDRAISING GAMES.



USE CODE: APG

OFFER INCLUDES MOST APRIL/MAY GAMES

**\$5 OF EVERY TICKET SOLD GOES DIRECTLY
BACK TO YOUR SCHOOL!**

Special Events

All-City Festival - 3/1/25
@Burton H.S.

Bass Bash - 3/16/25
@Davies Symphony Hall

Chamber Festival - 3/22/25
@Lawton Alt. School

Advanced Intermediate Orchestra

Arts Festival - 4/26/25
@A.P. Giannini

Spring Concert - 4/23/25
@A.P. Giannini

Upcoming Concert Dates!

2025

A.P. Giannini

Orchestra

Concerts Dates

Advanced Orchestra

CMEA Festival - 4/12/25
@Capuchino H.S.

Hoover Festival - 4/17/25
@Hoover M.S.

Spring Concert - 5/14/25
@A.P. Giannini

Beginning Intermediate Orchestra

Spring Concert - 4/23/25
@A.P. Giannini

Beginning Orchestra

Spring Concert - 5/7/25
@A.P. Giannini



APG choir had a great time performing their winter concert at the Fairmont, APG, and City Hall!
Thank you to Mr. Lewis for prepping the classes and conducting the concerts!

Come see APG choir students perform in several events this spring!

Saturday, March 1: All City Honors Festival at Burton HS 7:30 PM

Saturday, March 22: Solo and Ensemble Festival at Lawton K-8

Wednesday, April 23: Intermediate Concert at APG 6:00 PM



Saturday, April 26: Sunset Arts Festival at APG 10:00 AM - 2:00 PM

Friday, May 2: Advanced Choir CMEA Bay Festival at Marin School of the Arts (Novato)

Wednesday, May 7: Beginning Concert at APG 6:00 PM

Wednesday, May 14: Advanced Concert at APG 6:00 PM



Saturday, May 17: Music in our Parks Festival at Great America

Thank you for your continued support of our arts programs at APG!

Other Upcoming Events

Thursday, March 20 - Advanced Band collaboration (rehearsal) with Niu Valley (Honolulu) Middle School during Periods 1 & 2

Saturday, March 22 - Solo & Ensemble Festival (self-selected Guitar & Band students) at Marina Middle School

Tuesday, April 22 - Intermediate Ensembles (Guitar Ensembles & Stage Band) School-Day Concerts

Wednesday, April 23 - Intermediate Ensembles (Guitar Ensembles & Stage Band) Evening Concert for Families

Saturday, April 26 - APG Arts Festival (Advanced Band & Guitar Ensembles) at APG (10:00am-2:00pm)

Wednesday, May 7 - Beginning Ensembles (Beginning Band) School-Day & Evening Concerts

Tuesday, May 13 - Advanced Ensembles (Advanced Band) School-Day Concerts

Wednesday, May 14 - Advanced Ensembles (Advanced Band) Evening Concerts

Monday, June 2 - Promotion Ceremony (Advanced Band) during the school day at Lincoln High School Stadium



Upcoming Performance Friday, April 25th 6pm

The dance department is always excited about the spring semester! This is the time of year where we are fully dedicated to crafting the work we will present in our show. Currently, each class is working on 2 dances. The dance works are mostly student choreographed. Some are being created by guest artists from Alonzo King LINES Ballet, and others are smaller works full created by more advanced students.

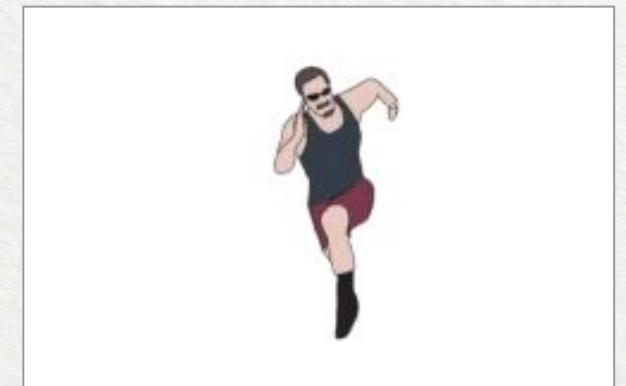
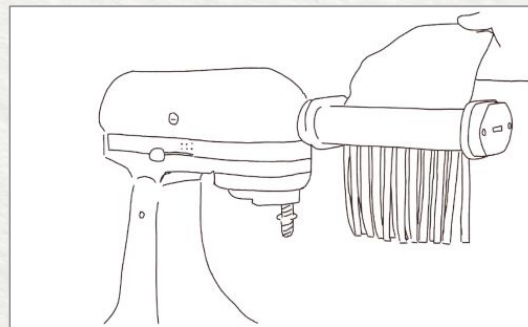
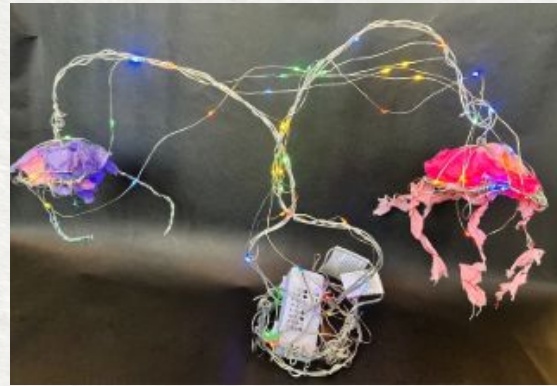
We are having our show a little earlier this year and we hope you can join us! Please come out and cheer on all of our hardworking students on Friday, April 25 at 6 pm. The show is free, and all are welcome.



Read the latest APG Arts Newsletter!

Here's a sneak peek at all the amazing things our APG Arts classes are up to.

Click [HERE](#) to see the full APG Arts newsletter!





From March 3-7, 2025* there will be a Ride Contest where students will have the chance to log their rides and complete daily challenges digitally or physically on a Challenge Book.

There is also an additional Art Contest for those inclined to express themselves creatively through any artistic medium.

This week-long event encourages the use of the 4-fun ways to get to school (walking, biking and rolling, taking public transit, and carpooling), promotes a fun way to get to school with friends, and students can earn prizes for participating.

The prizes include MUNI themed gift bags, notebooks, pens, gift cards and more! To sign up and learn more, you may visit www.RideMuniToSchool.org.

***NOTE: The Ride Challenge begins 7am on Friday, February 28, 2025.**

Ride Muni to School Week Challenge

Tutoring By The Bay



- Tutoring By The Bay is a free tutoring nonprofit club run by St. Ignatius students that are willing to help your child learn! Come by the Ortega Branch Library on Mondays from 3-5pm or Wednesdays from 3-4pm.

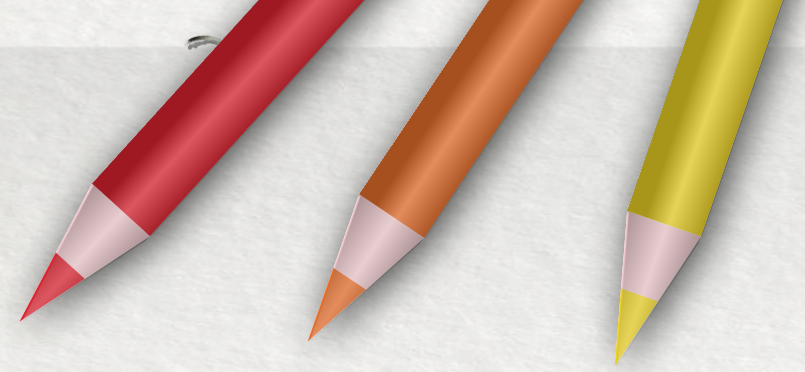


Completely
Free!

Sign up
here!



SCAN ME



Sign Up
HERE!



APG Attendance Office

New this School Year

- Report your student for a **Full Day** absence in your **ParentVUE** account via the mobile app or desktop
 - Instructions from **SFUSD**
 - **Note:** This form is for a **FULL DAY** absence only.
- **Early Dismissal / Permit to Leave School online form**

Reminder: Your student is responsible for picking up their *Permit to Leave School slip* from the Counseling Office before the start of school from 9:00am- 9:30am.

Students with a *Permit to Leave School* will exit from the main office doors.

Please don't pull into our parking lots nor block the school/city buses to pick up your student.

Other ways to report Attendance issues

Email Attendance

[404 APAttendance@sfusd.edu](mailto:404_APAttendance@sfusd.edu)

Provide a written note to the Counseling Office Admin, Ms. Dawson

Phone our Counseling Office at 415-759-2773

In all communications with the school regarding a student's absence or request to leave, please provide the following:

- Your name and identify yourself as the parent/guardian/caregiver of the student
- Student's name
- Date(s) of the absence(s) or leave
- Reason for the absence or leave
- Signature of a parent/caregiver and current date (if a written note)

EXCUSED ABSENCES & ILLNESSES

What to do if your student does not feel well? PLEASE STAY AT HOME!

If your student is exhibiting any of the symptoms below, please have your student stay home and rest. For fever: please return to school after 24 hours of being fever-free, without medication, has passed.

Fever of 100.4° F or higher, body chills/shivers	Sore throat	Shortness of breath	Headache	New loss of smell or taste
Nausea or Vomiting	Diarrhea	Body aches	Fatigue	Cough
Pinkeye	Rash	Mouth Sores	Abdominal Pain	Runny Nose

Families may be contacted for further follow up if needed for an ill student. If you are called to pick up your sick student, please do so promptly or arrange for them to get home safely immediately. We have limited spaces in our Wellness Center/School for sick students to wait without exposing others. If you have any questions regarding the SFUSD illness protocol, please [visit webpage HERE](#) or contact our School Nurse, Judy (ZhengJ1@sfUSD.edu).

HANDBOOK: EXCUSED/UNEXCUSED ABSENCES

4.1.4 Excused and Unexcused Absences

Student and Family Handbook

Chapter 1: Welcome ∨

Chapter 2: SFUSD's Commitment to Families and Students ∨

Chapter 3: Family Resources and Rights ∨

Chapter 4: Student Academic Expectations ∧

4.1 Attendance Guidelines ∧

4.1.1 Importance of Attendance

4.1.2 Recommendations for Temporary School Exclusion Due to Illness

4.1.3 What Parents/Caregivers Should Do When a Student Will Be Absent

4.1.4 Excused and Unexcused

Excused and Unexcused Absences

([SFUSD Board Policy 5113](#))

Valid Excused Absences (Absences Excused by State law)

Verification of student absences is accepted only from parents/guardians/caregivers, or the student if they are 18 years old or older.

CA Education Code 48205 states that a student shall be excused from school when the absence is:

- 1 Due to the pupil's illness, including an absence for the benefit of the pupil's mental or behavioral health.
- 2 Due to quarantine under the direction of a county or city health officer.
- 3 For the purpose of having medical, dental, optometric, or chiropractic services rendered.
- 4 For the purpose of attending the funeral services or grieving the death of either a member of the pupil's immediate family, or of a person that is determined by the pupil's parent or guardian to be in such close association with the pupil as to be considered the pupil's immediate family, so long as the absence is not more than five days per incident.
- 5 For the purpose of jury duty in the manner provided for by law.
- 6 Due to the illness or medical appointment during school hours of a child of whom the pupil is the custodial parent, including absences to care for a sick child, for which the school shall not require a note from a doctor.

Importance of Attendance

California law requires that children between the ages of 6 and 18 attend school every day. While the law does not currently apply to children below the age of six, research shows that early education (pre-school and kindergarten) is essential for future academic success. It is the parent/caregiver's responsibility to ensure that their child gets to school every day.

Tips for Parents/Caregivers: Getting to School on Time

- Make sure your child goes to bed early and gets a good night's sleep.
- Develop a morning routine (get dressed, eat breakfast, brush teeth) and stick with it.
- Talk with your child about the importance of attending school every day for academic success.
- Arrange a time every night without interruptions for your child to do homework.

Regular Attendance is Essential!

National and local research has shown that students with frequent absences, whether excused or unexcused, have lower literacy levels, lower grades and higher drop-out rates than students who attend school regularly.

The Governing Board believes that regular attendance plays an important role in student achievement. The Board will work with parents/guardians and students to ensure their compliance with all state attendance laws and may use appropriate legal means to correct problems of chronic absence or truancy. **Absence in excess of 10% or more days of school, whether those absences are excused or unexcused, will be considered Chronic Absence.**

For support in keeping your child in school, or if you have any questions about District Attendance Policy, please contact your school administrator or the Student Family Services Division, by calling (415) 340-1716, emailing sfink@sfusd.edu or submit an online form at familylink.sfusd.edu.

**SCHOOL
ATTENDANCE
IS VERY
IMPORTANT**